


CASE REPORT

Open Access



Utilization of a new technology of 3D biliary CT for ERCP-related procedures: a case report

Masao Toki^{1*}, Hidekatsu Tateishi², Tsubasa Yoshida¹, Koichi Gondo¹, Shunsuke Watanabe¹ and Tadakazu Hisamatsu^{1*} 

Abstract

Background: Endoscopic retrograde cholangiopancreatography (ERCP) is still performed using two-dimensional (2D) X-ray images. The success rate and risk of complications are considered operator-dependent. We explored performing an ERCP-related procedure with 3D-computed tomography (CT) biliary imaging for preoperative simulation and intraoperative reference in a patient with malignant biliary obstruction.

Case presentation: The patient was a 66-year-old man who underwent rectal resection and postoperative chemotherapy for rectal cancer. A liver metastasis caused obstructive jaundice and acute cholangitis, necessitating emergency hospitalization. A 3.5 cm mass in the hilar region of the biliary tree caused type IV biliary obstruction according to the Bismuth-Corlette classification of hilar cholangiocarcinoma. ERCP and biliary drainage were performed repeatedly, but had no effect. Given that selective bile duct drainage had proven extremely difficult with the conventional procedures, three-dimensional (3D) images were created from preoperative CT image data using a 3D image reconstruction system (SYNAPSE VINCENT version 5, FUJIFILM Corporation, Tokyo, Japan). Using the 3D images for preoperative planning and intraoperative reference, biliary drainage and stent placement were successfully performed without complications. Postoperatively, the patient had no further cholangitis or need for stent replacement up to his death.

Conclusions: We report the first case of an ERCP-related procedure with 3D biliary imaging for preoperative simulation and intraoperative reference in a patient with malignant biliary obstruction. The 3D image reconstruction is useful for preoperative planning and could contribute to an increased success rate, decreased complications, a shorter operation time, and reduced radiation exposure to the operator.

Keywords: Endoscopic retrograde cholangiopancreatography (ERCP), Malignant hilar biliary obstruction, Three-dimensional (3D) images

* Correspondence: tt3nai@ks.kyorin-u.ac.jp; thisamatsu@ks.kyorin-u.ac.jp

¹Department of Gastroenterology and Hepatology, Kyorin University School of Medicine, Shinkawa 6-20-2, Mitaka-shi, Tokyo 181-8611, Japan
Full list of author information is available at the end of the article



© The Author(s). 2020 **Open Access** This article is licensed under a Creative Commons Attribution 4.0 International License, which permits use, sharing, adaptation, distribution and reproduction in any medium or format, as long as you give appropriate credit to the original author(s) and the source, provide a link to the Creative Commons licence, and indicate if changes were made. The images or other third party material in this article are included in the article's Creative Commons licence, unless indicated otherwise in a credit line to the material. If material is not included in the article's Creative Commons licence and your intended use is not permitted by statutory regulation or exceeds the permitted use, you will need to obtain permission directly from the copyright holder. To view a copy of this licence, visit <http://creativecommons.org/licenses/by/4.0/>. The Creative Commons Public Domain Dedication waiver (<http://creativecommons.org/publicdomain/zero/1.0/>) applies to the data made available in this article, unless otherwise stated in a credit line to the data.

Background

Biliary drainage with endoscopic retrograde cholangiopancreatography (ERCP) is generally performed using endoscopy and two-dimensional (2D) fluoroscopic image guidance. Selective bile duct drainage is often difficult in patients with malignant biliary hilar obstruction because of the complicated positional relationships of the bile ducts and bile duct obstruction patterns. The technical difficulties result in longer procedure times, resulting in increased radiation exposure to patients and endoscopists, and it may be associated with a risk of complications [1–3]. This calls for innovations for simpler and safer ERCP-related procedures.

Recent introduction of multi-detector computed tomography (MDCT) and high-speed magnetic resonance imaging (MRI) have dramatically improved visualization for formulating diagnostic and therapeutic strategies in hepatopancreaticobiliary disease. In surgery and interventional radiology, a three-dimensional (3D) image analysis system is used to construct a 3D image that is applied in preoperative planning [4, 5]. Reports have indicated that it has contributed to shortening the procedure time, improving the procedure success rate, and reducing the incidence of complications. Respiratory-triggered three-dimensional MR cholangiopancreatography (3D-MRCP) provides high-spatial-resolution images of the biliary tract and pancreatic duct, and enables MR virtual endoscopy using volume rendering to visualize the lumens of the gallbladder, bile duct, and pancreatic duct [6]. However, the utility of 3D-CT image in ERCP-related procedures has not been reported. Here, we

report the first case in which we successfully performed biliary drainage using 3D-CT images for reference.

Case presentation

The patient was a 66-year-old man who underwent rectal resection and postoperative chemotherapy for rectal cancer. Bile duct obstruction due to a liver metastasis caused obstructive jaundice and acute cholangitis, which resulted in emergency hospitalization. On magnetic resonance imaging (Fig. 1a), a 3.5 cm mass in the biliary hilum caused type IV biliary obstruction according to the Bismuth-Corlette classification [7] of hilar cholangiocarcinoma. Despite several attempts at biliary drainage (branch of B3 and B2, B5, B7) via ERCP, obstructive jaundice was not improved. The patient was emergently hospitalized again because of acute cholangitis with a 39 °C fever and epigastric pain, although bile duct plastic stents (PS) had been placed in the left intrahepatic bile duct (branch of B3 and B2) and right intrahepatic bile duct (B5 and B7) (Fig. 1b). Repeated ERCP and biliary drainage were performed, had no effect as shown on the CT (Fig. 2). In this case, many of biliary branches were divided by the obstruction at hilar biliary. Only by 2D image, it was hard to identify the relation between dilated biliary branches and drainage tube placed. Given that selective bile duct drainage had proven extremely difficult with the conventional procedures, 3D images were created from preoperative CT image data using a 3D image reconstruction system (SYNAPSE VINCENT version 5, FUJIFILM Corporation, Tokyo, Japan). We used the 3D images for preoperative planning and

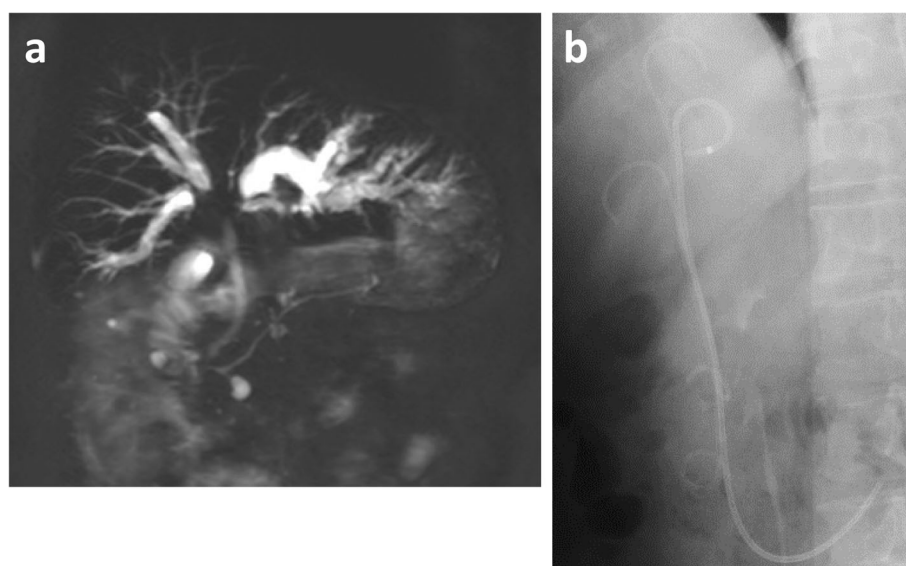


Fig. 1 **a** Magnetic resonance imaging. A metastasis in the biliary hilar region of the liver caused type IV biliary obstruction and bilateral intrahepatic bile duct dilation. **b**: ERCP imaging. PS had already been placed in the left intrahepatic bile duct (branch of B3 and B2) and right intrahepatic bile duct (B5 and B7). ERCP, endoscopic retrograde cholangiopancreatography; PS, plastic stent

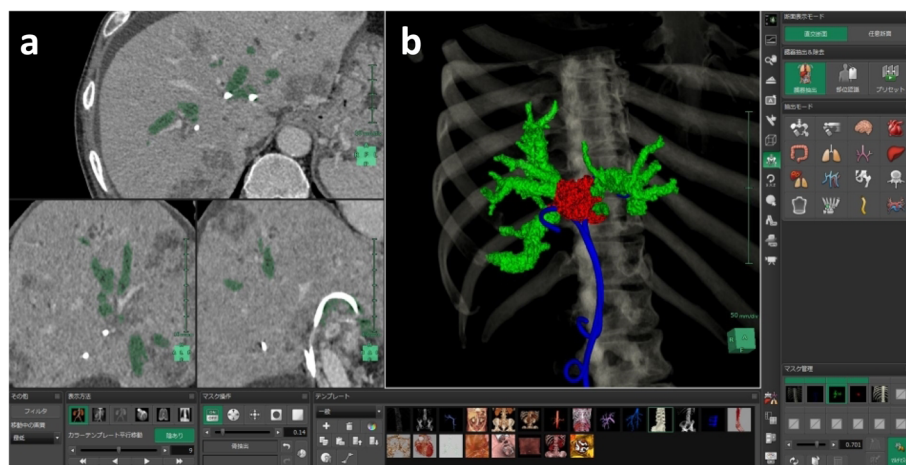


Fig. 2 Creation of 3D images of the biliary tree from CT image data using a 3D image analysis system (SYNAPSE VINCENT version 5, FUJIFILM Corporation, Tokyo, Japan). **a:** CT images. **b:** A 3D image created by tracing dilated intrahepatic bile ducts. Green: dilated bile ducts. Red: metastatic liver tumor at hilar biliary region. Blue: PS tubes placed previously. CT, computed tomography; PS, plastic stent; 3D, three-dimensional

performed biliary drainage using them as an intraoperative reference.

Residual dilation was observed in the left intrahepatic bile duct (B3). Although the PS was allowing slight decompression of the left intrahepatic bile duct (B2),

marked biliary dilation persisted; thus, the PS was deemed ineffective for B3, while no biliary dilation was found around the PSs placed in B5 and B7, so these were deemed to be effective. Marked dilation of B6 and B8 was noted, and drainage was deemed necessary (Fig. 3).

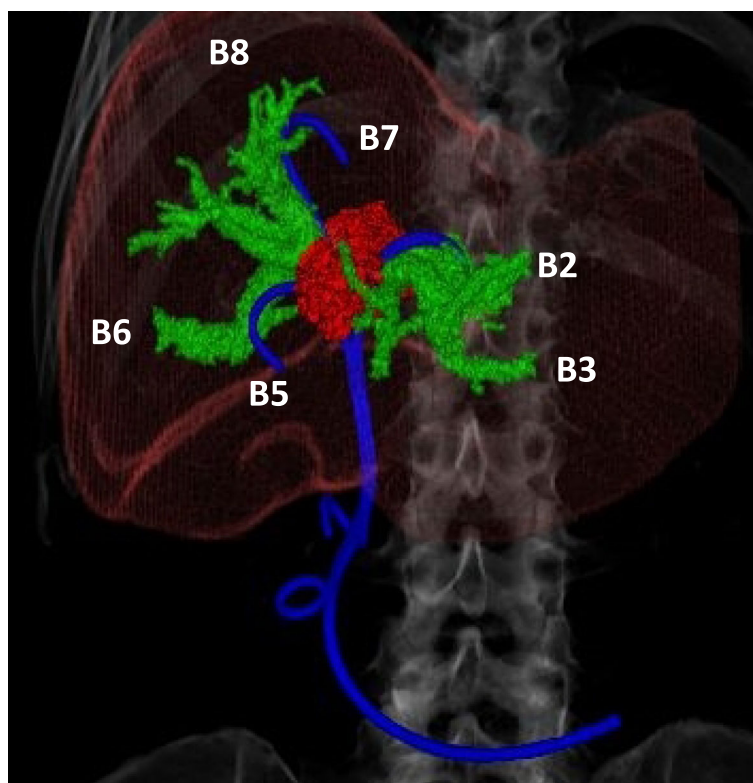


Fig. 3 Positional relationship between the completed 3D biliary image and plastic stents. Green: dilated bile ducts. Red: metastatic liver tumor at hilar biliary region. Blue: PSs placed previously. PS, plastic stent; 3D, three-dimensional

On the basis of the above findings, we planned preoperatively that an additional PS would be placed in the deep part of B3 and several other PSs would be replaced (B6 and B8). The entire ERCP procedure was performed under the combination of fluoroscopic images of a standard side-view duodenoscope (EDT-580, FUJIFILM, Tokyo, Japan) and the 3D images. This procedure was performed using a multipurpose imaging system incorporating a C-arm (VersiFlex Apla, HITACHI corporation Tokyo, Japan). During the actual ERCP procedure, endoscopists could see the endoscope video (a), the 3D image of the bile ducts that rotate freely (b), and the 2D fluoroscopic image (c) at the same time (Fig. 4). With the 3D images for preoperative planning and intraoperative reference, biliary drainage was successfully performed without complications (Fig. 5). Postoperatively, the patient had no further cholangitis or need for stent replacement up to his death.

Discussion and conclusions

ERCP is still performed using 2D fluoroscopy, with operator- and case-dependent success rates and complication rates. Despite the advances in fluoroscopic equipment such as a multipurpose imaging system incorporating C-arm, ERCP using 2D fluoroscopy images has room for improvement in terms of procedure times and radiation exposure for patients and medical staff.

There were cases that could be sufficiently confirmed and considered useful for preoperative planning by MRCP [8, 9]. On the other hand, 3D images could selectively depict the necessary branches of the bile duct,

and in addition, the lumbar spine and tumor could be selectively described in the background, making it very easy to understand the three-dimensional positional relationship.

In this patient with malignant hilar biliary stenosis, selective bile duct drainage was technically difficult. We created the 3D images for pre-operative evaluation. The 3D images successfully identified the biliary branches that required drainage, and we were able to confirm the positional relationships of the biliary branches. We could check the created 3D image by moving it freely in any direction. The 3D images were available in the operating room, and were used for intraoperative reference during the procedure. As a result, the drainage of the target bile duct branch was successfully completed with reduced procedure time.

Demands for minimally invasive procedures for medical purposes are rapidly increasing. In the field of digestive endoscopy, various endoscopic procedures under X-ray fluoroscopic guidance are being adopted, including ERCP. The radiation exposure involved in those procedures has led to major concerns over radiation exposure [3]. ERCP poses a potential risk of radiation exposure to medical staff and patients [10, 11]. Efforts are needed to further reduce radiation exposure to patients and medical staff as recommended by the European Society of Gastrointestinal Endoscopy 2012 guidelines. The American Society for Gastrointestinal Endoscopy recommended the frequency with which fluoroscopy time and radiation dose are measured and documented as quality indicators for ERCP [10, 12].

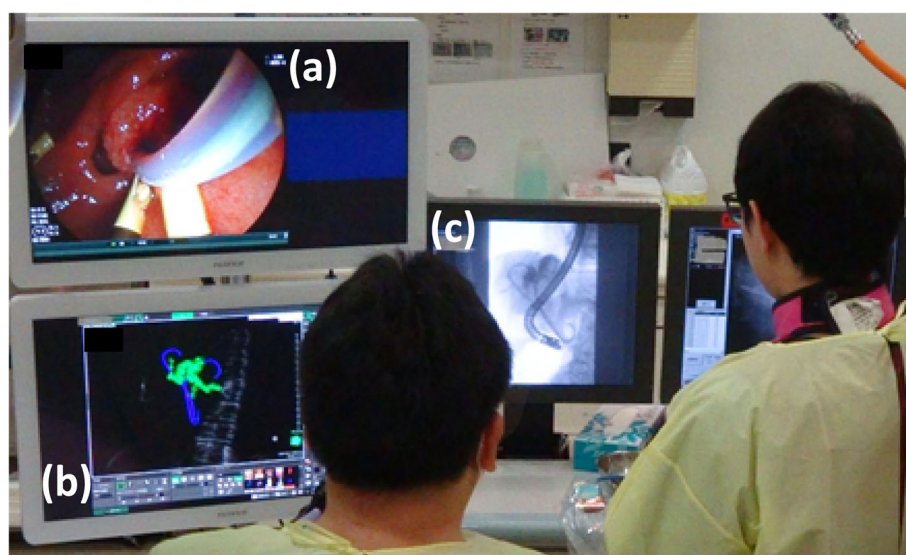


Fig. 4 Actual ERCP procedure. Endoscopists could see the endoscope screen (a), a 3D image of the biliary tree, which could be rotated freely (b), and a 2D real-time fluoroscopic image (c) at the same time. ERCP, endoscopic retrograde cholangiopancreatography; 3D, three-dimensional; 2D, two-dimensional

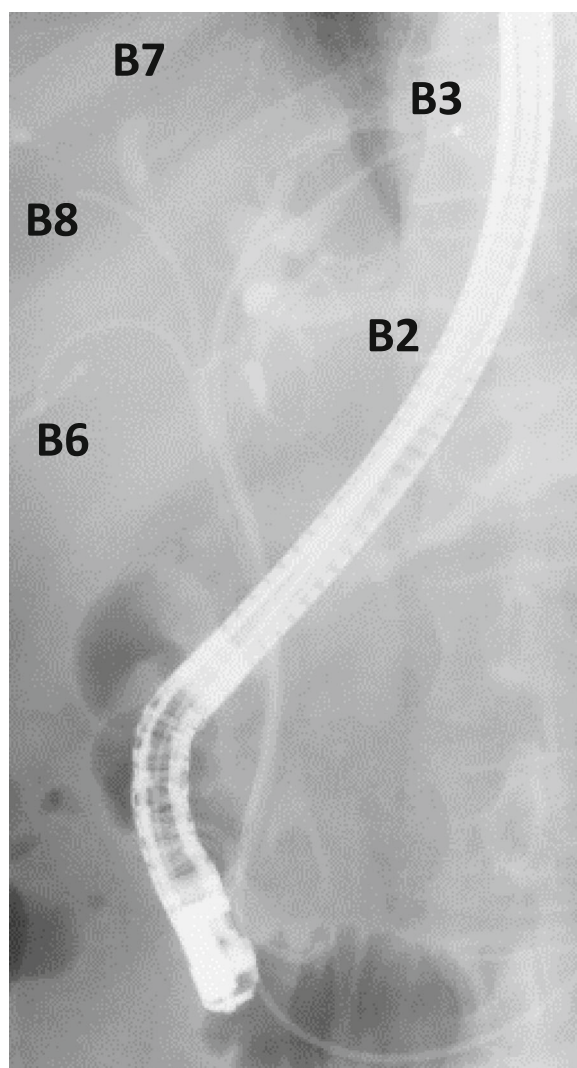


Fig. 5 A 2D X-ray image of replaced PSs. PS, plastic stent; 2D, two-dimensional

Pre- and intra-operative 3D images can delineate the bile duct anatomy more easily and shorten the procedure time, consequently reducing radiation dose, making for a safer procedure. This tool is useful to understand localization and navigate the bile duct drainage, rather than to evaluate dilated branches precisely.

We reported here a case with bile duct obstruction due to metastatic rectal cancer successfully treated with the combination of 3D images and fluoroscopically-assisted ERCP. This approach could revolutionize existing ERCP-related procedures.

Abbreviations

ERCP: Endoscopic retrograde cholangiopancreatography; 3D: Three-dimensional; 2D: Two-dimensional; CT: Computed tomography; MRI: Magnetic resonance imaging; MDCT: Multi-detector computed tomography; PS: Plastic stent

Acknowledgments

We thank Libby Cone, MD, MA, from Edanz Group Japan (www.edanzediting.com/ac) for editing drafts of this manuscript.

Authors' contributions

MT and TH designed and conceived this project. MT, TY, KG, and SW collected the data. MT, TY, KG, SW, and HT created 3D images. MT and TH prepared the manuscript. TH approved the final draft submitted. All authors read and approved the manuscript.

Funding

Not applicable.

Availability of data and materials

The datasets used and analyzed during the current study are available from the corresponding author on reasonable request.

Ethics approval and consent to participate

The study was approved by the Ethics Committee of Kyorin University (number 1280; Tokyo, Japan). Written informed consent was obtained from the patient.

Consent for publication

Written informed consent was obtained from the patient for publication of this case report and any accompanying images.

Competing interests

All authors declare that they have no competing interests.

Author details

¹Department of Gastroenterology and Hepatology, Kyorin University School of Medicine, Shinkawa 6-20-2, Mitaka-shi, Tokyo 181-8611, Japan.

²Department of Radiology, Kyorin University School of Medicine, Shinkawa 6-20-2, Mitaka-shi, Tokyo 181-8611, Japan.

Received: 8 March 2020 Accepted: 12 May 2020

Published online: 24 May 2020

References

- Hayashi S, Takenaka M, Hosono M, Nishida T. Radiation exposure during image-guided endoscopic procedures: the next quality indicator for endoscopic retrograde cholangiopancreatography. *World J Clin Cases*. 2018; 6(16):1087–93.
- Menon S, Mathew R, Kumar M. Ocular radiation exposure during endoscopic retrograde cholangiopancreatography: a meta-analysis of studies. *Eur J Gastroenterol Hepatol*. 2019;31(4):463–70.
- Hayashi S, Nishida T, Matsubara T, Osugi N, Sugimoto A, Takahashi K, et al. Radiation exposure dose and influencing factors during endoscopic retrograde cholangiopancreatography. *PLoS One*. 2018;13(11):e0207539.
- Sugimoto M, Yasuda H, Koda K, Suzukida J, Yamazaki M, Tezuka T, et al. Navigation surgery in the biliary surgery and NOTES: carbon dioxide enhanced MDCT cholangiopancreatography and image overlay surgery. *Nihon Geka Gakkai Zasshi*. 2008;109(2):77–83.
- Tanahashi Y, Kondo H, Yamamoto M, Osawa M, Yokoyama T, Sugawara T, et al. Efficacy of automated supplying artery tracking software using multidetector-row computed tomography images for emergent Transcatheter arterial embolization. *Cardiovasc Intervent Radiol*. 2018;41(11):1786–93.
- Azuma T, Yamaguchi K, Iida T, Oouhida J, Suzuki M. MR virtual endoscopy for biliary tract and pancreatic duct. *Magn Reson Med Sci*. 2007;6(4):249–57.
- Bismuth H, Nakache R, Diamond T. Management strategies in resection for hilar cholangiocarcinoma. *Ann Surg*. 1992;215(1):31–8.
- Xu X, Li L, Zhang XN. Correlation analysis of preoperative magnetic resonance cholangiopancreatography and prognosis in hilar cholangiocarcinoma. *Clin Invest Med*. 2019;42(4):E14–e21.
- Rhaem R, Piardi T, Renard Y, Chetboun M, Aghaei A, Hoeffel C, et al. Preoperative magnetic resonance cholangiopancreatography before planned laparoscopic cholecystectomy: is it necessary? *J Res Med Sci*. 2019; 24:107.
- Chung KH, Park YS, Ahn SB, Son BK. Radiation protection effect of mobile shield barrier for the medical personnel during endoscopic retrograde

cholangiopancreatography: a quasi-experimental prospective study. *BMJ Open*. 2019;9(3):e027729.

11. Tsapaki V, Paraskeva KD, Mathou N, Andrikopoulos E, Tentas P, Triantopoulou C, et al. Patient and endoscopist radiation doses during ERCP procedures. *Radiat Prot Dosim*. 2011;147(1–2):111–3.
12. Adler DG, Lieb JG 2nd, Cohen J, Pike IM, Park WG, Rizk MK, et al. Quality indicators for ERCP. *Gastrointest Endosc*. 2015;81(1):54–66.

Publisher's Note

Springer Nature remains neutral with regard to jurisdictional claims in published maps and institutional affiliations.

Ready to submit your research? Choose BMC and benefit from:

- fast, convenient online submission
- thorough peer review by experienced researchers in your field
- rapid publication on acceptance
- support for research data, including large and complex data types
- gold Open Access which fosters wider collaboration and increased citations
- maximum visibility for your research: over 100M website views per year

At BMC, research is always in progress.

Learn more biomedcentral.com/submissions

