

RESEARCH ARTICLE

Open Access

Covered versus uncovered self-expandable metallic stents for palliation of malignant gastric outlet obstruction: a systematic review and meta-analysis

Ya-min Pan^{*}, Ji Pan, Li-kun Guo, Min Qiu and Jia-jun Zhang

Abstract

Background: Self-expandable metallic stents (SEMSs) are widely used for palliation of malignant gastric outlet obstruction (GOO). There are two types of SEMS, covered and uncovered, each with its own advantages and disadvantages. We aimed to compare the efficacy and safety between uncovered and covered SEMSs in the palliation of malignant gastric outlet obstruction.

Methods: Databases including PubMed, EMBASE, the Cochrane Library, the Science Citation Index and momentous meeting abstracts were searched and evaluated by two reviewers independently.

Results: Nine trials involving 849 patients were analyzed. Meta-analysis showed there was no significant difference in technical success rate (RR 1.0, 95% CI [0.98, 1.01]), clinical success rate (RR 1.04, 95% CI [0.98, 1.11]), post-stenting dysphagia score (WMD -0.01, 95% CI [-0.52, 0.50]), stent patency (WMD -0.31, 95% CI [-1.73, 1.11]), overall complications (RR 1.07, 95% CI [0.87, 1.32]) and reintervention rate (RR 1.30, 95% CI [0.92, 1.83]) between covered and uncovered SEMSs group. However, covered SEMSs were associated with higher migration rate (RR 3.48, 95% CI [2.16, 5.62], $P < 0.00001$) and lower obstruction rate (RR 0.42, 95% CI [0.24, 0.73], $P = 0.002$).

Conclusions: In the palliative treatment of malignant gastric outlet obstruction, both covered and uncovered SEMSs are safely and effective. Covered stents can reduce the risk of restenosis, whereas uncovered stents are effective in decreasing stent migration.

Keywords: Covered SEMSs, Uncovered SEMSs, Gastric outlet obstruction, Meta-analysis

Background

Malignant gastric outlet obstruction (GOO) is recognized as a complication of advanced malignant disease in the upper gastrointestinal tract, which usually include distal gastric cancer, periampullary carcinoma, lymphoma and metastases to the duodenum [1,2]. GOO always leads to intractable vomiting, nausea, abdominal discomfort and poor oral food intake, which diminish quality of life. Compared with palliative gastrojejunostomy or other surgical procedures, self-expandable metallic stents (SEMSs) can rapidly relieve obstructive symptoms with fewer complications and mortality [3,4]. There are two types of SEMSs, covered and

uncovered type; both of them are widely used for palliation of GOO [5-7], each with its own advantages and disadvantages.

To the best of our knowledge, a systematic review [8] on this topic has been published. More recently, additional studies have been published and some conflicting results have emerged. Therefore, we believe an updated systemic review and meta-analysis is required to evaluate the efficacy and safety between uncovered and covered SEMSs for palliation of malignant gastric outlet obstruction.

Methods

Study identification and eligibility criteria

This study has been approved by ethics committee of Shu-guang Hospital Affiliated to Shanghai University of

^{*} Correspondence: Panyamin2014@163.com
Department of Endoscopy, Shu-guang Hospital Affiliated to Shanghai University of Traditional Chinese Medicine, 201203 Shanghai, China

Traditional Chinese Medicine. A comprehensive literature search was done to identify all relevant studies that compared covered stents with uncovered stents in the palliation of malignant gastric outlet obstruction. The PubMed, EMBASE, the Cochrane Library and the Science Citation Index were searched systematically for all articles published up to Dec.2013, without language restriction, which included the following terms in their titles, abstracts, or keywords lists: “gastroduodenal obstruction”, “covered stent”, “uncovered stent”, “malignant gastric outlet obstruction”. The references in retrieved articles were also screened manually. The abstracts of United European Gastroenterology week (UEGW) and Digestive Disease Week (DDW) were also searched systematically.

The inclusion criteria were as follows: (1) RCTs and nonrandomized prospective and retrospective studies; (2) analyses of both uncovered stents and covered stents; (3) patients were diagnosed malignant gastric outlet obstruction; (4) outcome measures included technical and clinical success, overall complications, stent patency and reintervention rate; (5) when multiple articles published by the same team from the same institute within the same study interval were identified, only the latest or the most detailed and informative article, or the one with the best quality in methodology, was included. Commentaries, case reports, reviews, or guidelines were excluded.

Data extraction

Two reviewers (YM.P and J.P) abstracted data independently and reached consensus on all items. Data were extracted on: first author; year of publication; study interval; number of patients; age and sex; study design, stent characteristics; technical success rate; clinical success rate; stent obstruction; stent migration; overall complications; reintervention rate; stent patency and GOO scoring system (GOOSS).

Assessment of methodological quality

The quality of all studies was assessed by using the Newcastle-Ottawa Scale with some modifications to match the needs for this meta-analysis [9]. The quality of the studies was evaluated by examining three items: patient selection, comparability of study groups, and assessment of outcome. Studies achieving five or more stars were considered high quality. Methodological quality assessment was independently carried out by two of the authors. Any disagreement was resolved by consensus.

Statistical analysis

Statistical manipulation was performed with Review Manager Software (Version 5.1, Windows, Nordic Cochrane Center, Copenhagen, Denmark). Values for analysis were extracted from published reports or calculated from crude data. For summary statistics in meta-analyses, the Relative

Risk (RR) is recommended for dichotomous data, and the Weighted Mean Difference (WMD) is recommended for continuous data. Pooled estimates were presented with a 95% confidence interval. $P < 0.05$ was considered significant. A sensitivity analysis [10] determined how the results would be influenced if one study was removed from the analysis for each outcome; this indicates the extent to which the results are (or are not) robust to assumptions and decisions that were made when carrying out the synthesis. Because of the anticipated clinical heterogeneity across the included studies, we decided to use only the random effect model before pooling data. This adjusts for variability of results among studies and provides a more conservative estimate of an effect by using a wider confidence interval [11].

Results

Identification of eligible studies

The literature search yielded 382 abstracts for review. Finally, 9 trials [5-7,12-17] were included (Figure 1). 3 trials [5,14,16] were randomized clinical trials, 5 trials [6,7,12,15,17] were retrospective studies and one report [13] was prospective study. The combined studies enrolled 849 patients, of whom 380 underwent covered stents placement and 469 with uncovered stents. The characteristics of included trials were listed in Table 1. The quality assessment and scores are summarized in Table 1. Seven studies scored five or more stars on the modified Newcastle Ottawa Scale [5,12-17]. Characteristics of stents were not consistent in all studies (Table 2). More than two types of stents were used in 3 trials [14,15,17].

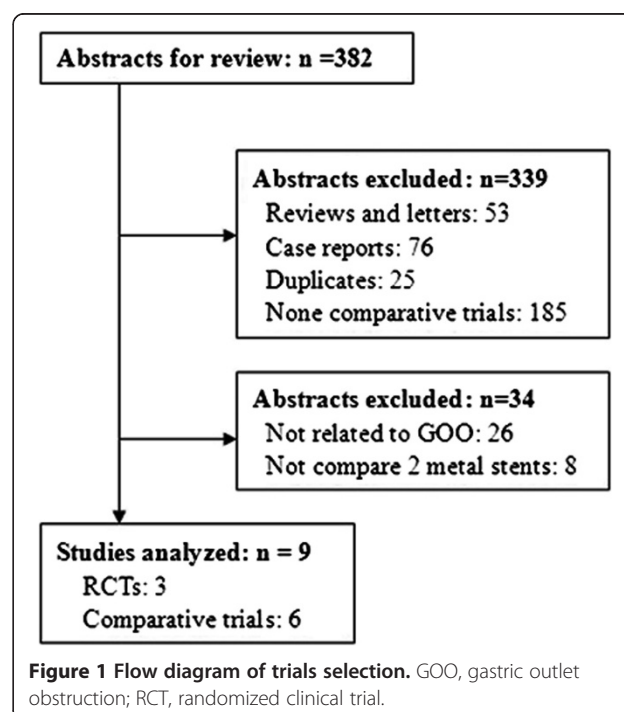


Table 1 Characteristics of the included studies

Study author	Year	Design	Study interval (y)	Patients (n) covered/uncovered	Age (M, y) covered/uncovered	Female (n, %)	Disease diagnosis (n)	Matching	Quality score (*)
Yu Kyung Cho [5]	2004	RCT	NR	13/12	65.0 ^s	12(48%)	GC(25)	1,2,3	*****
Jong Pil Im [6]	2008	R	2005-2006	24/18	60.7 ^s	7(16%)	GC(26)/PC(12)/Others(13)	NR	****
Seungmin Bang [7]	2008	R	1998-2003	53/79	58.0/59.0	40(30%)	GC(109)/PC(13)/Others(12)	NR	***
Iruru Maetani [12]	2009	R	1998-2006	29/31	70.6/72.2	27(45%)	GC(28)/PC(20)/Others(12)	1,2,3,4,5	*****
Kee Myung Lee [13]	2009	P	1998-2007	70/84	67.2/63.3	48(31%)	GC(122)/PC(19)/Others(13)	1,2,3,5	*****
Chan Gyoo Kim [14]	2010	RCT	2003-2007	40/40	58.0/57.0	17(21%)	GC(80)	1,2,3,4,5	*****
Chan Ik Park [15]	2012	R	2006-2011	96/128	64.0/65.0	15(17%)	GC(224)	1,2,5	*****
Iruru Maetani [16]	2013	RCT	2007-2010	31/31	69.4/68.1	32(52%)	GC(27)/PC(26)/Others(9)	1,2,3,4,5	*****
Sang Myung Woo [17]	2013	R	2003-2010	24/46	62.0/61.0	30(43%)	PC(46)/Others(24)	1,2,3,4,5	*****

R, retrospective; P, prospective; RCT, randomized control trial; NR, not reported.

^s, mean age of all patients; (*), star rating (max 9).

Matching: 1, age; 2, sex; 3, diagnosis; 4, site of obstruction; 5, previous treatment.

GC, gastric cancer; PC, pancreatic cancer.

Others, including gallbladder cancer, bile duct cancer, ampullary cancer, duodenal cancer and metastasis.

The main composition of covered materials is polytetrafluoroethylene membrane or polyurethane membrane.

Technical and clinical success rate

All trials assessed the technical success rate related to stenting procedure, and 6 trials [12-17] assessed the clinical success rate. Meta-analysis showed that there was no significant difference in technical success rate (RR 1.00, 95% CI [0.98, 1.01]) (Figure 2a) and clinical success rate (RR 1.04, 95% CI [0.98, 1.11]) (Figure 2b). The post-stenting GOOSS was recorded in 6 trials [5,12-16], there was no significant difference between covered and uncovered stents group (P = 0.96) (Figure 3a).

Stent patency

The stent patency was reported in 6 studies [6,13-17]. The median patency duration was 9 to 23 weeks with covered stents and 10 to 22 weeks with uncovered stents respectively. Meta-analysis showed there was no significant difference between covered and uncovered stents group (WMD -0.31, 95% CI [-1.73, 1.11]) (Figure 3b). Chemotherapy after endoscopic stenting was reported in 6 studies, totally 42.7% (270/632) patients underwent chemotherapy. All studies reported that palliative chemotherapy was not associated with stent patency.

Complications and reintervention

Meta-analysis showed there were no significant difference in overall complications between covered and uncovered stents group (P = 0.54) (Figure 4c). However, covered stents were associated with higher stent migration (RR 3.48, 95% CI [2.16, 5.62]) (Figure 4a), and uncovered

stents were associated with higher stent obstruction (RR 0.42, 95% CI [0.24, 0.73]) (Figure 4b) in subgroup analysis. Reintervention for stent-related complications was reported in 6 studies [5,12-15,17]. Meta-analysis showed there was no significant difference in reintervention rate between two groups (P = 0.13) (Figure 4d).

Sensitivity analysis

The results of sensitivity analysis are listed in Table 3. When high quality studies were analyzed (Star ≥ 5), meta-analysis showed there was no significant difference in technical success rate, clinical success rate, stent patency, overall complications, Post-stenting GOOSS and reintervention rate between two groups. Covered stents were associated with higher stent migration rate (RR 3.49, 95% CI [1.92, 6.32]) and lower stent obstruction rate (RR 0.39, 95% CI [0.18, 0.84]) compared to uncovered stents. In the studies containing N ≥ 70 patients, meta-analysis showed the same results. Data were also analyzed by random effects models. Sensitivity analysis showed that the results were robust.

Discussion

Malignant gastric outlet obstruction without effective intervention would result in progressive deterioration and death [3]. Surgical bypass has been the standard treatment, but it is associated with significantly high morbidity and mortality. Endoscopic stenting is an alternative treatment, which palliates malignant obstruction with lower morbidity and mortality [4]. There are two types SEMs widely used in clinical, covered and uncovered. Which is better? Maetani et al. [6] reported covered stents were associated with more frequent need for reintervention

Table 2 Stent characteristics of the included studies

Study/author	Group	Stent type	Stent material	Stent diameter (mm)	Stent length (cm)	Covered material
Yu Kyung Cho	Covered	NR	Nickel-Titanium	NR	NR	NR
	Uncovered		Nickel-Titanium			
Jong Pil Im	Covered	NR	NR	18	9/11	NR
	Uncovered			18	11/12/16	
Seungmin Bang	Covered	Niti-S	NR	20/22	6-15	PU
	Uncovered	Niti-S		20/22	6-15	
Iruru Maetani	Covered	Ultraflex	NR	18/23	10/12/15	PTFE
	Uncovered	Ultraflex		18/23	10/12/15	
Kee Myung Lee	Covered	Niti-S	Nitinol	18	6/8/10	PU
	Uncovered	Niti-S	Nickel-Titanium	18	6/8/10	
Chan Gyoo Kim	Covered	Niti-S	Nitinol	18/20	8/10/12	PTFE
	Uncovered	Wallstent/Wallflex		20/22	6/9/12	
Chan Ik Park	Covered	Niti-s	Nitinol	NR	6-16	PU
	Uncovered	Wallstent/Hanaro			6-16	
Iruru Maetani	Covered	Niti-S	Nitinol	20	NR	PTFE
	Uncovered	Comvi		20		
Sang Myung Woo	Covered	Niti-s/Bona	NR	18-22	4-12	NR
	Uncovered	Niti-s/Bona/Wallflex		18-22	4-12	

PTFE, polytetrafluoroethylene; PU, polyurethane.

Niti-S (Taewoon Inc. South Korea); Bona (Standard SciTech Inc. Seoul, Korea).

Hanaro (M.I. Tech. Seoul, Korea).

Wallflex (Boston Scientific, USA); Wallstent (Boston Scientific, USA).

Ultraflex (Boston Scientific, USA).

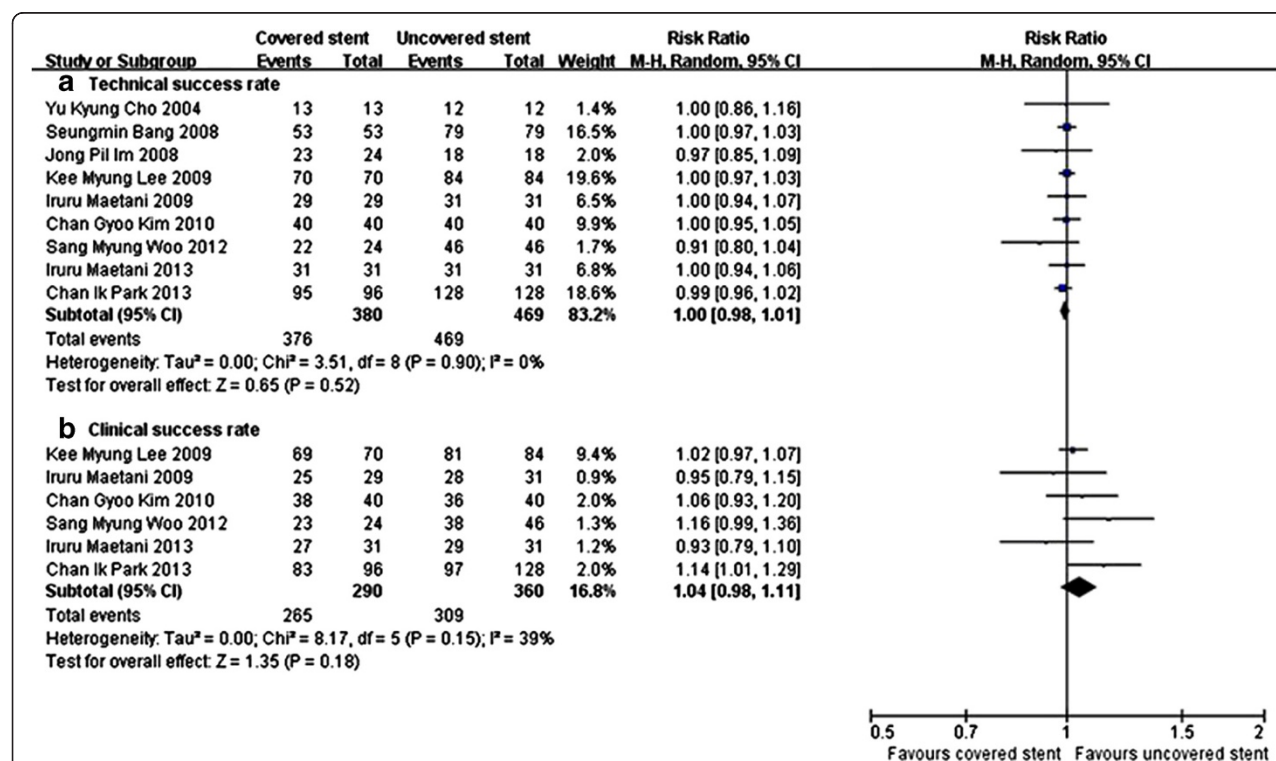
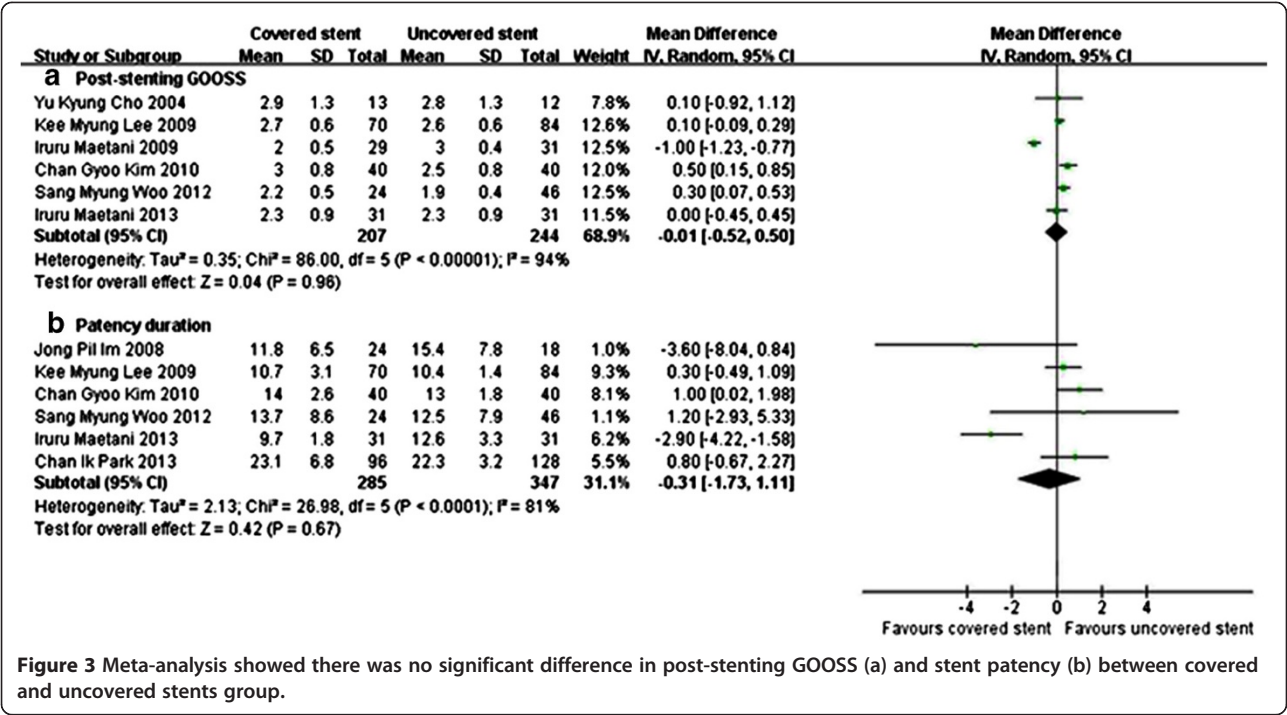


Figure 2 Meta-analysis showed there was no significant difference in technical success rate (a) and clinical success rate (b) between covered and uncovered stents group.



than uncovered stents. Kim et al. [14] reported both covered and uncovered SEMs were effective and safe in treatment of patients. Recently, a systematic review [8] on this topic has been published. However, only two RCTs related to GOO were included for analysis in this systematic review, the number of included patients may be too small to make effective statistic analysis. More recently, additional studies have been published and some conflicting results have emerged. Therefore, we believe an updated systemic review and meta-analysis is required to evaluate the efficacy and safety between uncovered and covered SEMs.

In this meta-analysis, there was no significantly difference between uncovered and covered stents in technical and clinical success rates. Endoscopic stenting was deployed through a guide wire, when the guide wire could not pass the stricture, and then the stent could not be deployed successfully. So the success of stenting is affected by the degree of narrowing and tortuosity of the stricture rather than the difference between the types of stent used.

The GOOSS was used to evaluate the severity of obstructive symptom, the GOOSS assigns a point score depending on the patient's level of oral intake (no oral intake, 0; liquids only, 1; soft solids, 2; low-residue or full diet, 3) [18]. Most of patients could not intake any fluid before stenting, though most included studies were retrospective, the patients' characteristics were similar in baseline. There was significant difference in GOOSS pre-stenting and post-stenting, but there was no difference between covered and uncovered stents after stenting.

These mean that both stents have similar effect in palliation of malignant obstruction.

Stent patency is an important factor in QOL of patients. Meta-analysis showed there was no significant difference in stent patency between two groups. The main cause influencing patency was stent migration in covered stent group and stent obstruction in uncovered stent group respectively. The covered stent was associated with advantage of preventing tumor ingrowth, but this advantage was offsetted by high migration. Chemotherapy after stent placement could be independently associated with prolonged stent patency, because chemotherapy may stabilize or decrease tumor burden and thereby decrease malignant ingrowth or overgrowth. Some studies [19,20] reported chemotherapy after stent placement contributed to longer durations of stent patency in gastric cancer patients. However, we could not find any association of stent patency with palliative chemotherapy after stent placement in included studies. Further prospective randomized trials are needed to determine the role of chemotherapy.

Complications included stent obstruction, stent migration, bleeding, stent fracture, perforation and others, the most complications were stent obstruction and migration. There was no difference in overall complications between the covered stent group and uncovered stent group. One study [21] has shown that covered stents placed in the biliary tract prevent tumor ingrowth without increasing migration frequency. However, in subgroup analysis, our meta-analysis showed that stent

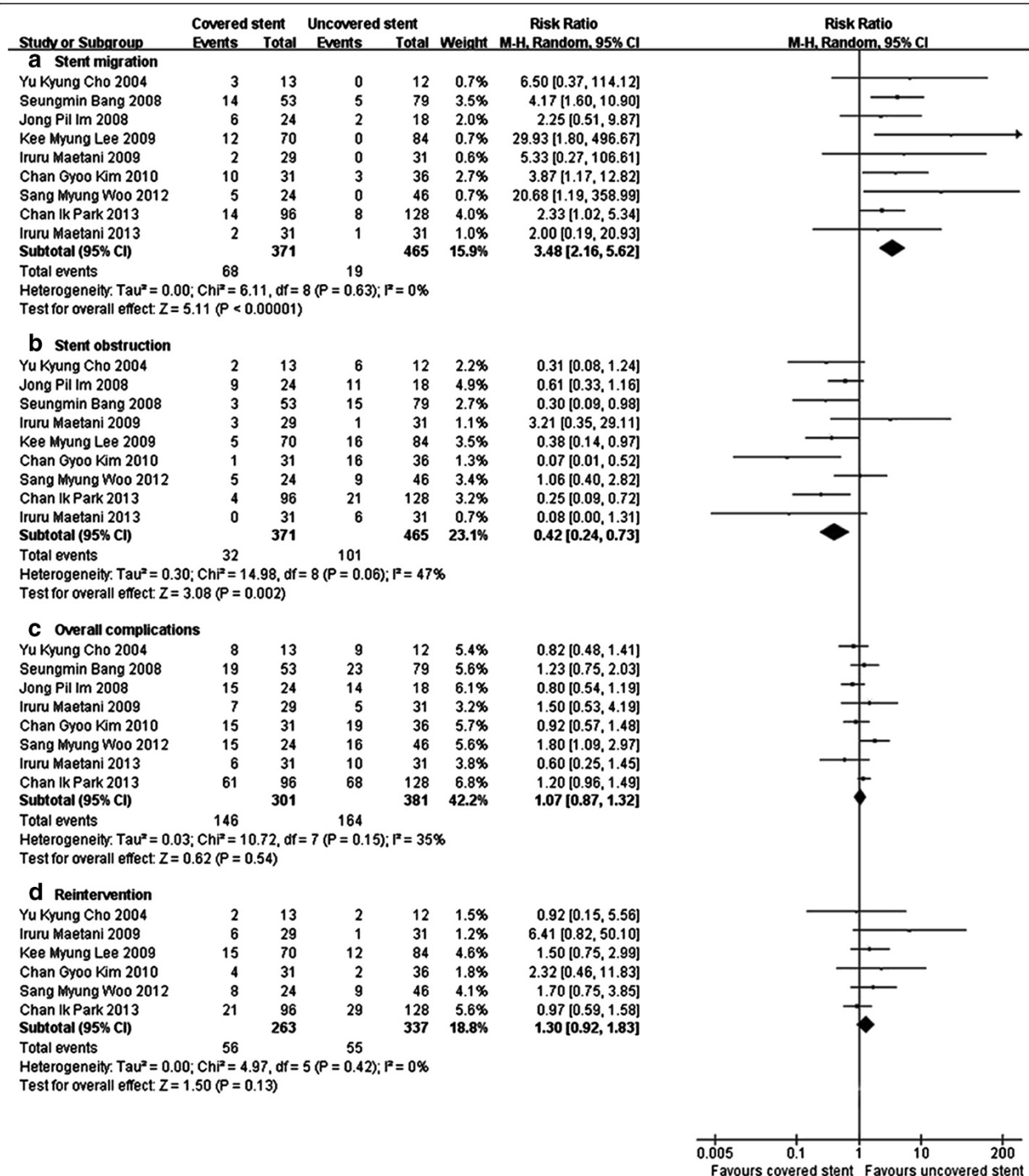


Figure 4 Complications and reintervention between covered and uncovered metal stents group. Meta-analysis showed there was no significant difference in overall complications (c). However, covered stents were associated with higher stent migration (a) and less restenosis (b) compared to uncovered stents. There was no significant difference in reintervention rate between two groups (d).

migration was more frequent in the covered stent group, which is maybe the expansion force of the covered stent is transferred to the intestinal wall through the covering membrane rather than through the wire mesh, and the friction between stent and tumor might not be enough

to keep the stent stationary. The cause of stent obstruction included tumor ingrowth and overgrowth. Meta-analysis showed uncovered stents were associated with higher stent obstruction compared to covered stents, because uncovered stents are often associated with tumor ingrowth through

Table 3 Sensitivity analysis

Primary outcome	No. studies	No. patients	Rate (%) (Covered/Uncovered)	RR/WMD (95% CI)	P-value
High quality studies(Star ≥ 5)					
Technical success rate	7	675	99.0/100	0.99 [0.98, 1.01]	0.51
Clinical success rate	6	650	91.4/85.8	1.04 [0.98, 1.11]	0.18
Post-stenting GOOSS	6	451	-	-0.01 [-0.52, 0.50]*	0.96
Stent patency	5	590	-	-0.05 [-1.50, 1.39]*	0.94
Stent migration	7	662	16.3/3.3	3.49 [1.92, 6.32]	<0.0001
Stent obstruction	7	662	6.8/20.4	0.39 [0.18, 0.84]	0.02
Overall complications	6	508	50.0/44.7	1.11 [0.86, 1.44]	0.43
Reintervention rate	6	600	21.3/16.3	1.30 [0.92, 1.83]	0.13
Studies containing ≥ 70 patients					
Technical success rate	5	660	98.9/100	1.00 [0.98, 1.01]	0.53
Clinical success rate	4	528	92.6/84.6	1.08 [0.99, 1.18]	0.08
Post-stenting GOOSS	3	304	-	0.26 [-0.05, 0.48]*	0.06
Stent patency	4	528	-	0.62 [-0.06, 1.18]*	0.07
Stent migration	5	647	20.1/4.3	4.00 [2.05, 7.80]	<0.0001
Stent obstruction	5	647	6.6/20.6	0.35 [0.17, 0.74]	0.006
Overall complications	4	493	53.9/43.6	1.22 [0.99, 1.51]	0.06
Reintervention rate	4	515	21.7/17.7	1.25 [0.88, 1.78]	0.21

R, retrospective trial; P, prospective trial; RCT, randomized control trial.

*, WMD (95%CI).

GOOSS, gastric outlet obstruction scoring system.

the stent mesh. 3 trials reported the tumor overgrowth rate; there was no significant difference between two groups. When stent migration or stent obstruction occurred, endoscopic or surgical interventions should be taken. Though 3 trials reported uncovered stent was associated with lower re-intervention rate, meta-analysis showed there was no significant difference between covered and uncovered stents.

Several limitations of the present study need to be considered. First, there was significant heterogeneity for main outcomes. The source of heterogeneity may include the different publishing time of studies, the study design (6 none-RCT studies), the selection criteria, the characteristic of patients and stents. Though the data was treated with random effect models, there was still some influence to final results. Second, included studies were associated with small sample sizes, different levels of the intervention, different follow-up duration; those could also influence the results. Third, there were many different causes of GOO, which including gastric cancer, pancreatic cancer and others. The different characteristic of diseases might lead to different stent patency and complications. Fourth, the selective reporting of studies with positive results may result in overestimation of technical, clinical success rate and stent patency, and cause some bias to our meta-analysis.

Conclusions

Both covered and uncovered SEMs are technically feasible and effective in the palliative treatment of malignant gastric outlet obstruction. Meta-analysis showed there was no significant difference in stent patency, overall complications and reintervention; whereas in subgroup analysis, stent obstruction was more frequent with covered stents, and stent migration occurred more frequently with uncovered stents. The retrospective nature of these reports and their small sample sizes suggest that prospective controlled trials with large sample sizes are required to confirm the results of the current meta-analysis.

Consent

Written informed consent was obtained from the patient for the publication of this report and any accompanying images.

Competing interests

The authors declare that they have no competing interest.

Authors' contributions

Y-M.P and J.P participated in abstracts search; Y-M.P and L-K.G participated in data extraction; Y-M.P and M.Q participated in the design of the study and performed the statistical analysis; J-J.Z conceived of the study, and participated in its design and coordination; all authors read and approved the final manuscript.

Acknowledgment

We thank Dr Jun Wu for his statistical support in meta-analysis.

Received: 28 April 2014 Accepted: 24 September 2014
Published: 30 September 2014

Reference

- Kikuchi S, Tsutsumi O, Kobayashi N, Tsukamoto H, Shimao H, Sakakibara Y, Hiki Y, Kakita A: Does gastrojejunostomy for unresectable cancer of the gastric antrum offer satisfactory palliation? *Hepatogastroenterology* 1999, **46**:584–587.
- Smith JW, Brennan MF: Surgical treatment of gastric cancer. Proximal, mid, and distal stomach. *Surg Clin North Am* 1992, **72**:381–399.
- Mehta S, Hindmarsh A, Cheong E, Saada J, Tighe R, Lewis MP, Rhodes M: Prospective randomized trial of laparoscopic gastrojejunostomy versus duodenal stenting for malignant gastric outflow obstruction. *Surg Endosc* 2006, **20**:239–242.
- Hosono S, Ohtani H, Arimoto Y, Kanamiya Y: Endoscopic stenting versus surgical gastroenterostomy for palliation of malignant gastroduodenal obstruction: a meta-analysis. *J Gastroenterol* 2007, **42**:283–290.
- Yu Kyung C, Sang Woo K, Se Hee K, Park JY: The comparison of covered and uncovered expandable metal stents in the palliation of malignant gastric outlet obstruction. *Gastrointest Endosc* 2004, **59**:M1797.
- Im JP, Kang JM, Kim SG, Kim JS, Jung HC, Song IS: Clinical outcomes and patency of self-expanding metal stents in patients with malignant upper gastrointestinal obstruction. *Dig Dis Sci* 2008, **53**:938–945.
- Bang S, Kim HJ, Park JY, Park YS, Kim MH, Park SW, Lee YC, Song SY: Effectiveness of self-expanding metal stents for malignant antropyloric and duodenal obstruction with a comparison between covered and uncovered stents. *Hepatogastroenterology* 2008, **55**:2091–2095.
- Yang Z, Wu Q, Wang F, Ye X, Qi X, Fan D: A systematic review and meta-analysis of randomized trials and prospective studies comparing covered and bare self-expandable metal stents for the treatment of malignant obstruction in the digestive tract. *Int J Med Sci* 2013, **10**:825–835.
- Stang A: Critical evaluation of the Newcastle-Ottawa scale for the assessment of the quality of nonrandomized studies in meta-analyses. *Eur J Epidemiol* 2010, **25**:603–605.
- Sterne JA, Egger M, Smith GD: Systematic reviews in health care: Investigating and dealing with publication and other biases in meta-analysis. *BMJ* 2001, **323**:101–105.
- Berlin JA, Laird NM, Sacks HS: A comparison of statistical methods for combining event rates from clinical trials. *Stat Med* 1989, **8**:141–151.
- Maetani I, Ukita T, Tada T, Shigoka H, Omuta S, Endo T: Metallic stents for gastric outlet obstruction: reintervention rate is lower with uncovered versus covered stents, despite similar outcomes. *Gastrointest Endosc* 2009, **69**:806–812.
- Lee KM, Choi SJ, Shin SJ, Hwang JC, Lim SG, Jung JY, Yoo BM, Cho SW, Kim JH: Palliative treatment of malignant gastroduodenal obstruction with metallic stent: prospective comparison of covered and uncovered stents. *Scand J Gastroenterol* 2009, **44**:846–852.
- Kim CG, Choi IJ, Lee JY, Cho SJ, Park SR, Lee JH, Ryu KW, Kim YW, Park YI: Covered versus uncovered self-expandable metallic stents for palliation of malignant pyloric obstruction in gastric cancer patients: a randomized, prospective study. *Gastrointest Endosc* 2010, **72**:25–32.
- Park CI, Kim JH, Lee YC, Jahng J, Youn YH, Park H, Lee SI: What is the ideal stent as initial intervention for malignant gastric outlet obstruction? *Dig Liver Dis* 2013, **45**:33–37.
- Maetani I, Mizumoto Y, Shigoka H, Omuta S, Saito M, Tokuhisa J, Morizane T: Placement of a triple-layered covered versus uncovered metallic stent for palliation of malignant gastric outlet obstruction: A multicenter randomized trial. *Dig Endosc* 2014, **26**:192–199. doi:10.1111/den.12117. [Epub ahead of print].
- Woo SM, Kim DH, Lee WJ, Park KW, Park SJ, Han SS, Kim TH, Koh YH, Kim HB, Hong EK: Comparison of uncovered and covered stents for the treatment of malignant duodenal obstruction caused by pancreaticobiliary cancer. *Surg Endosc* 2013, **27**(6):2031–2039.
- Adler DG, Baron TH: Endoscopic palliation of malignant gastric outlet obstruction using self-expanding metal stents: experience in 36 patients. *Am J Gastroenterol* 2002, **97**:72–78.
- Kim JH, Song HY, Shin JH, Choi E, Kim TW, Jung HY, Lee GH, Lee SK, Kim MH, Ryu MH, Kang YK, Kim BS, Yook JH: Metallic stent placement in the palliative treatment of malignant gastroduodenal obstructions: prospective evaluation of results and factors influencing outcome in 213 patients. *Gastrointest Endosc* 2007, **66**:256–264.
- Cho YK, Kim SW, Hur WH, Nam KW, Chang JH, Park JM, Lee IS, Choi MG, Chung IS: Clinical outcomes of self-expandable metal stent and prognostic factors for stent patency in gastric outlet obstruction caused by gastric cancer. *Dig Dis Sci* 2010, **55**:668–674.
- Isayama H, Komatsu Y, Tsujino T, Sasahira N, Hirano K, Toda N, Nakai Y, Yamamoto N, Tada M, Yoshida H, Shiratori Y, Kawabe T, Omata M: A prospective randomized study of “covered” versus “uncovered” diamond stents for the management of distal malignant biliary obstruction. *Gut* 2004, **53**:729–734.

doi:10.1186/1471-230X-14-170

Cite this article as: Pan *et al.*: Covered versus uncovered self-expandable metallic stents for palliation of malignant gastric outlet obstruction: a systematic review and meta-analysis. *BMC Gastroenterology* 2014 **14**:170.

Submit your next manuscript to BioMed Central and take full advantage of:

- Convenient online submission
- Thorough peer review
- No space constraints or color figure charges
- Immediate publication on acceptance
- Inclusion in PubMed, CAS, Scopus and Google Scholar
- Research which is freely available for redistribution

Submit your manuscript at
www.biomedcentral.com/submit

