

RESEARCH ARTICLE

Open Access

Chromosomal imbalances are uncommon in chagasic megaesophagus

Marilanda F Bellini^{1,2}, Antonio J Manzato³, Ana E Silva^{1*}, Marileila Varella-Garcia²

Abstract

Background: Chagas' disease is a human tropical parasitic illness and a subset of the chronic patients develop megaesophagus or megacolon. The esophagus dilation is known as chagasic megaesophagus (CM) and one of the severe late consequences of CM is the increased risk for esophageal carcinoma (ESCC). Based on the association between CM and ESCC, we investigated whether genes frequently showing unbalanced copy numbers in ESCC were altered in CM by fluorescence in situ (FISH) technology.

Methods: A total of 50 formalin-fixed, paraffin-embedded esophageal mucosa specimens (40 from Chagas megaesophagus-CM, and 10 normal esophageal mucosa-NM) were analyzed. DNA FISH probes were tested for *FHIT*, *TP63*, *PIK3CA*, *EGFR*, *FGFR1*, *MYC*, *CDKN2A*, *YES1* and *NCOA3* genes, and centromeric sequences from chromosomes 3, 7 and 9.

Results: No differences between superficial and basal layers of the epithelial mucosa were found, except for loss of copy number of *EGFR* in the esophageal basal layer of CM group. Mean copy number of *CDKN2A* and CEP9 and frequency of nuclei with loss of *PIK3CA* were significantly different in the CM group compared with normal mucosa and marginal levels of deletions in *TP63*, *FHIT*, *PIK3CA*, *EGFR*, *CDKN2A*, *YES* and gains at *PIK3CA*, *TP63*, *FGFR1*, *MYC*, *CDKN2A* and *NCOA3* were detected in few CM cases, mainly with dilation grades III and IV. All changes occurred at very low levels.

Conclusions: Genomic imbalances common in esophageal carcinomas are not present in chagasic megaesophagus suggesting that these features will not be effective markers for risk assessment of ESCC in patients with chagasic megaesophagus.

Background

Chagas' disease is a human tropical parasitic disease which occurs in the Americas, particularly in South America. It affects 16 to 18 million people in tropical and subtropical countries of Latin America [1]; in Brazil, the number of cases has reached 6 million [2]. During the chronic phase, 6 to 7% of chagasic patients develop mega syndromes represented by muscular hypertrophy and dilation of the esophagus or colon, in consequence of destruction of the myenteric and submucous plexus by the protozoan *Trypanosoma cruzi* [3]. The digestive forms, megaesophagus or megacolon may be observed in advanced stages of the disease [3].

Megaesophagus is consequence of achalasia characterized by the destruction or lack of intramural nerve

plexus, which determines the absence of peristalsis and lack of openness of the lower esophageal sphincter in response to swallowing. In consequence, food retention or esophageal stasis occurs, leading to the appearance of chronic esophagitis, acanthosis, paraceratose and leukoplakia, possibly pre-cancerous lesions [3]. One of the severe late consequences of chagasic megaesophagus is the increased risk (3% to 8%) of developing esophageal squamous cell carcinoma (ESCC) compared to when megaesophagus is not present [4-6]. Also, ESCC develops in chagasic megaesophagus patients at a younger age than in those without this disease [5]. The detection of cancer in these patients is difficult because the symptoms are hidden by the severe dysphagia caused by megaesophagus [7]. The diagnosis is frequently late, when the patient is in advanced stage, resulting in a poor prognosis [5].

* Correspondence: anabete@ibilce.unesp.br

¹UNESP, São Paulo State University, Department of Biology, Campus São José do Rio Preto, SP, Brazil

ESCC has been reported as the ninth most common malignancy and ranks the sixth most frequent cause of death worldwide, but its incidence varies largely among regions [8]. Approximately 16,470 new cases of esophageal carcinoma were expected in the US population in 2009 [9]. The Brazilian National Institute of Research in Cancer (INCA) reported that esophageal cancer was the sixth in the cancer rank mortality in 2000 with 5,307 deaths. The estimated incidence in 2008 was 10550 new cases with an incidence per 100 thousand individuals varying among geographical areas from 1.04 to 19.07 in males and 0.39 to 7.58 in females [8].

In ESCC, molecular cytogenetic techniques have shown common occurrence of unbalanced genomic regions involved in amplification of oncogenes and deletion of tumor suppressor genes [10,11]. However, studies in benign esophageal lesions with precancerous potential as megaesophagus are scarce. This study used FISH technique to investigate chagasic megaesophagus for genomic status of genes frequently unbalanced in ESCC with the goal of identifying potential markers of risk to cancer. The selected targets included *FHIT*, *TP63*, *PIK3CA*, *EGFR*, *FGFR1*, *MYC*, *CDKN2A*, *YES1* and *NCOA3* genes, all of which have been reported as occurring in significantly abnormal numbers in ESCC [12-19].

Methods

Subjects

Formalin-fixed, paraffin-embedded (FFPE) esophageal mucosa was obtained from 40 patients with diagnosis of chagasic megaesophagus (CM) who underwent middle and distal esophageal biopsies from 2000 to 2007 at the Hospital de Base (São José do Rio Preto, SP, Brazil). The study was approved by the Institution Research Ethical Committee (CEP) and by the Brazilian National Research Ethics Committee (CONEP), and written informed consent was obtained from all patients. Among the 40 CM patients, the mean age was 62.5 years (range: 40 - 83 years) and 20 were male; 29 were never-alcoholics, 3 former-alcoholics (≥ 5 years of abstinence) and 8 current alcoholics; 18 were never-smokers, 6 former-smokers (≥ 5 years of quitting) and 16 were current smokers. The megaesophagus diagnosis was made by physical examination, and radiologic and endoscopic study of esophageal motility by manometry [3]. The dilation grade of megaesophagus was classified as I to IV, based on the retention of contrast, diameter, tonicity of the lower sphincter and the length of the esophagus body [20]. This study cohort included 5 patients with megaesophagus grade I, 7 with grade II, 17 with grade III and 11 with grade IV. The CM group was followed for 2 to 4 years (median follow up = 2,8 years)

and no one developed ESCC, probably due to the short follow up of patients.

The control group (NM) was composed by 10 health subjects who were submitted to endoscopy under suspicion of dyspepsia, but the histopathological analysis has shown normal esophageal mucosa. In this group, the mean age was 42.4 (range: 26 - 67 years); 3 individuals were male and 7 female; 6 were never-alcoholics and four current alcoholics; 7 were never smokers and 3 current smokers.

Fluorescence In Situ Hybridization (FISH)

Serial 4 μm -thick sections were cut from paraffin-embedded blocks and mounted in glass slides pre-treated with 3-aminopropyl-triethoxysilane/acetone solution. Specimens were incubated at 56°C overnight, deparaffinized in Citrisolv washes (Fisher Brand, Cat #22-143975) (three times for 10 min each), and dehydrated in 100% ethanol. After incubation in 2 \times SSC (Sodium chloride, sodium citrate solution, pH 7.0) at 75°C, sections were digested with proteinase K (0.25 mg/ml in 2 \times SSC, pH 7.0) at 45°C, rinsed in 2 \times SSC (pH 7.0) at room temperature for 5 min and dehydrated in an ethanol series.

The following DNA probe sets were used: (a) *EGFR*/CEP7 (Abbott Molecular, Cat. # 32-191053, *EGFR* mapped at 7p12), *P16*/CEP9 (Abbott Molecular, Cat. # 32-190078, *CDKN2A* mapped at 9p12), *c-MYC* (Abbott Molecular, Cat. # 32-190006, *MYC* mapped at 8q24)/homebrew *FGFR1* (RP11-350N15, mapped at 8p12), and the homebrew probes *FHIT* (CTD-2196D15, mapped at 3p14.2)/centromere 3 ($p\alpha$ 3.5), *TP63* (RP11-373I6, mapped at 3q28)/*PIK3CA* (RP11-245C23, mapped at 3q26) and *YES1* (RP11-769O8, mapped at 18q11.31)/*NCOA3* (RP11-456N23, mapped at 20q12). The homebrew probes were prepared from BAC clones and purified DNA was labeled using the Nick Translation Kit (Abbott Molecular Cat. # 32-801300). In each probe set, one target was labeled with green fluorophore (Spectrum Green) and the other with red fluorophore (Spectrum Red). The probe set was applied to the selected area, which was covered with glass coverslip and sealed with rubber cement. Co-denaturation of chromosomal and probe DNAs was performed at 85°C for 10 min and hybridization was allowed to occur in a humidified chamber at 37°C for 20-24 h for commercial probes and 40-48 h for homebrew probes. After hybridization, the slides were washed twice in 2 \times SSC/0.3% NP-40 at 73°C for 2 min, rinsed in 2 \times SSC at room temperature for 2 min, dehydrated in ethanol series, air dried and counterstained with 4', 6'-diamino-2-phenylindole - DAPI, (0.3 $\mu\text{g}/\text{ml}$ in Vectashield Mounting Medium, Vector, Cat. # H-1200).

Fluorescence signals were scored in epifluorescence microscope using single band filters for DAPI, FITC (fluorescein), and Texas red, double-band pass filter (FITC and Texas red) and triple-band pass filter (DAPI, FITC, and Texas Red). Histological areas previously selected in the HE-stained (hematoxylin and eosin) sections were identified in the hybridized slides. Signals were scored in 100 epithelial nuclei per specimen, in at least four distinct areas: 50 nuclei in the superficial layer (larger cells, closer to the lumen) and 50 nuclei in the basal layer (darker HE-stained nuclei, smaller cells, closer to the muscular layer). The scoring was performed in both layers to check for differences between proliferate activity, since basal layer cells are in high proliferative activity, whereas the superficial layer cells are more mature. For 3 genes, *FHIT*, *EGFR* and *CDKN2A*, the experiments were performed including centromeric sequences of carrier chromosomes as an internal control, respectively chromosomes 3, 7 and 9. This design was necessary for *FHIT* and *CDKN2A* since these genes are known for their loss in cancer specimens [21,22]. For each FISH probe set, tissue sections from two normal subjects were used as control.

Statistical Analysis

Descriptive statistics were calculated using an Microsoft Excel macro template previously validated including mean copy number per cell, standard deviation and frequency of cells with 1, 2 and ≥ 3 copies of each DNA target tested, as well as the ratio for gene/control probe when applicable. The superficial and basal layers were compared by *t*-student paired test, and between the experimental groups were compared by *t*-student unpaired test; in both cases confidence level was established as 0.05 [23]. Association between gene status with age, gender, life style factors (smoking and alcoholism), and megaesophagus grade in the CM group was compared by ANOVA and the comparisons for losses and gains, and aneusomies, between the groups, were done by χ^2 test. One exploratory analysis using three-dimensional plots was performed for the percentages of genes status classes.

Results

The descriptive indexes (mean and standard deviation) for the tested genes (*FHIT*, *PIK3CA*, *TP63*, *EGFR*, *FGFR1*, *MYC*, *CDKN2A*, *YES1*, *NCOA3*) and centromeric sequences (chromosomes 3, 7 and 9 evaluated respectively with the genes *FHIT*, *EGFR* and *CDKN2A*), and the results of the statistical analyses for comparison of mean copy numbers between the superficial and basal layers in each group are presented in Table 1. The mean values in the CM group ranged from 1.49 to 1.78 in the superficial layer and from 1.45 to 1.79 in the

basal layer. In the NM group, the mean frequencies ranged from 1.35 to 1.77 in the superficial layer and from 1.61 to 1.79 in the basal layer. Superficial and basal layers of the esophageal mucosa did not show significant differences, excepted for *EGFR* in the CM group ($p = 0.008$) that showed lower copy number in the basal layer. Results from both layers were combined for comparison of mean copy numbers per cell of the each molecular target and no difference was detected between CM and NM. However, the copy number of *CDKN2A* was significantly lower ($p < 0.0001$) in the CM group compared to NM, and similar results were observed for the corresponding centromere 9 (CEP9) ($p = 0.0002$).

In another investigative approach, frequencies of nuclei with normal (2 copies) or loss (< 2 copies) and gain (> 2 copies) for each gene were compared (Table 2), and only for *PIK3CA* there were higher frequencies of cells with copy number loss in the CM group compared to NM (36.4% vs. 28.5%). Statistical analysis was not performed for gain due to the scarcity of cells with this pattern. Aneusomies involving centromeres of chromosomes 3, 7, and 9 were also investigated (Table 2). The CM group showed significantly increased frequencies of cells with copy number loss of centromeres of chromosomes 7 and 9 (51% and 44%, respectively) in comparison to the NM group (28% and 23%, respectively). The CM group also showed numerically higher frequencies of cells with copy number gain of centromeres of chromosomes 7 and 9 (1.68% and 10.38%, respectively) than the NM group (0.50% and none, respectively), although the numbers were too small for statistical analyses.

The gene/centromere ratios for *FHIT*/CEN3, *EGFR*/CEP7 and *CDKN2A*/CEP9, the probe sets including matched targets in the study, were all balanced (close to 1) and differences were not detected between the mean copy number of each target within each group (Table 3). These results suggest that loss of *FHIT*, *EGFR* and *CDKN2A* was accompanied by loss of their respective chromosomes.

Data were also subject to an exploratory analysis using three-dimensional plots of the percentages of cells per genomic pattern (loss, balanced and gain) for individual cases as illustrated in Figure 1. Several cases were identified harboring deletions on specific targets: *CM7* (*YES1*), *CM12* (*CDKN2A*), *CM13* (*PIK3CA*; *TP63*), *CM19* (*PIK3CA*), *CM30* (*EGFR*), *CM36* (*FHIT*; CEP9), *CM16* and *CM34* (CEP9). Other cases showed genomic gain for specific targets: *CM3* (*MYC*), *CM6* (*TP63*; *MYC*), *CM7* (*TP63*), *CM11* (*PIK3CA*; *CDKN2A*), *CM16* (*CDKN2A*), *CM28* (*PIK3CA*), *CM30* (*MYC*; *FGFR1*), *CM36* (*NCOA3*), and *CM11* and *CM21* (CEP9). Figure 2 illustrates unbalanced status of genes and centromeric DNA targets in megaesophagus specimens.

Table 1 Mean copy number per cell for the 12 DNA targets tested in esophageal mucosa of chagasic megaesophagus and normal mucosa groups.

Targets	CM			NM			t-Student CM × NM
	Mucosa Layers			Mucosa Layers			
	Superficial	Basal	Total	Superficial	Basal	Total	
	Mean ± SD			Mean ± SD			
<i>FHIT</i>	1.77 ± 0.08	1.78 ± 0.08 Range: 1.56-1.90	1.76 ± 0.08	1.35 ± 0.49	1.75 ± 0.04 Range: 1.71-1.77	1.74 ± 0.04	^{ns} P = 0.7803
<i>PIK3CA</i>	1.76 ± 0.09	1.78 ± 0.08 Range: 1.56-1.96	1.77 ± 0.07	1.70 ± 0.09	1.78 ± 0.11 Range: 1.64-1.86	1.74 ± 0.01	^{ns} P = 0.6982
<i>TP63</i>	1.77 ± 0.11	1.78 ± 0.09 Range: 1.56-2.06	1.77 ± 0.09	1.70 ± 0.09	1.78 ± 0.11 Range: 1.64-1.86	1.74 ± 0.01	^{ns} P = 0.5304
<i>EGFR</i>	1.52 ± 0.12 ^a	1.45 ± 0.15 ^b Range: 1.25-1.80	1.49 ± 0.13 ^{a, b}	1.60 ± 0.00	1.74 ± 0.01 Range: 1.60-1.75	1.67 ± 0.01	^{ns} P = 0.3700
<i>FGFR1</i>	1.78 ± 0.01	1.76 ± 0.10 Range: 1.56-2.22	1.77 ± 0.08	1.63 ± 0.01	1.70 ± 0.03 Range: 1.62-1.72	1.67 ± 0.03	^{ns} P = 0.2200
<i>MYC</i>	1.76 ± 0.09	1.75 ± 0.09 Range: 1.58-1.77	1.76 ± 0.08	1.66 ± 0.01	1.74 ± 0.02 Range: 1.69-1.70	1.70 ± 0.01	^{ns} P = 0.5396
<i>CDKN2A</i>	1.49 ± 0.08	1.50 ± 0.07 Range: 1.34-1.59	1.50 ± 0.06	1.76 ± 0.14	1.72 ± 0.01 Range: 1.69-1.79	1.74 ± 0.07	* P < 0.0001
<i>YES1</i>	1.67 ± 0.13	1.67 ± 0.12 Range: 1.37-1.99	1.67 ± 0.11	1.70 ± 0.08	1.68 ± 0.13 Range: 1.58-1.75	1.69 ± 0.07	^{ns} P = 0.8099
<i>NCOA3</i>	1.65 ± 0.11	1.64 ± 0.11 Range: 1.37-1.80	1.64 ± 0.10	1.66 ± 0.11	1.61 ± 0.01 Range: 1.59-1.68	1.64 ± 0.06	^{ns} P = 0.7656
Centromere 3	1.77 ± 0.08	1.79 ± 0.07 Range: 1.56-1.90	1.77 ± 0.07	1.71 ± 0.07	1.76 ± 0.08 Range: 1.68-1.79	1.74 ± 0.08	^{ns} P = 0.6638
Centromere 7	1.53 ± 0.12	1.50 ± 0.16 Range: 1.26-1.53	1.52 ± 0.13	1.67 ± 0.01	1.79 ± 0.04 Range: 1.76-1.82	1.73 ± 0.21	^{ns} P = 0.1235
Centromere 9	1.53 ± 0.09	1.53 ± 0.09 Range: 1.33-1.65	1.53 ± 0.07	1.77 ± 0.15	1.77 ± 0.04 Range: 1.70-1.84	1.77 ± 0.10	* P = 0.0002

CM, chagasic megaesophagus; NM, normal mucosa; SD, standard-deviation; Statistical Analysis: t-Student; *, P < 0.05; ^{ns}, P > 0.05; ^{a, b}, P = 0.008.

No significant association was detected in CM group between mean copy number per cell of each DNA target tested and parameters such as age, gender and the life style factors tobacco smoking and alcoholism although the small size of each subset impaired robust conclusion. Similarly, no significant differences were observed on mean copy number per cell of each genomic target according the dilation grades of megaesophagus (data not shown). However, the CM cases identified with genomics deletions and gains in the three-dimensional plots were mostly classified as grades III and IV, suggesting that chromosomal imbalances are more likely to occur in more advanced grades.

Discussion

Esophageal squamous cell carcinoma is one of the most prevalent cancers worldwide and has multifactorial origin, in which environment factors, especially alcohol ingestion and smoking, play significant role [10,24]. Several genetic alterations are also associated with ESCC,

such as chromosomal changes, allelic deletions, activation of oncogenes and inactivation of tumor suppressor genes [10,11]. In tropical and subtropical countries of Latin America such as Brazil, the risk of ESCC may also be related to megaesophagus due to Chagas' disease. The period between onset of symptoms related to achalasia and detection of cancer ranges from 17 to 28 years [4]. In the current study no patient developed esophageal carcinoma, which can also be due to insufficient follow up.

This study showed that genomic copy number changes were not common events in megaesophagus. Among the tested 12 DNA targets mapped to 6 distinct chromosomes, there was only marginal differences between specimens from chagasic megaesophagus and normal esophageal mucosa. The only statistically significant difference in copy number between groups involved *CDKN2A*. Loss of function of *CDKN2A* (also called *MTS-1* or *P16*) prevents the blocking of G1 phase and appears to be a necessary event for the progression of

Table 2 Frequencies of cells with loss, normal status and gain in copy numbers of the target in chagasic megaesophagus and normal mucosa groups.

Target	<2 copies per cell		χ^2 test	2 copies per cell		>2 copies per cell	
	CM	NM		CM	NM	CM	NM
<i>FHIT</i>							
	N 20	2	P = 10.672 ^{ns}	2478	144	6	3
	% 0.79	1.34		98.96	96.64	0.24	2.04
<i>PIK3CA</i>							
	N 898	57	P = 0.000*	1530	139	35	4
	% 36.39	28.50		61.99	69.50	1.42	2.00
<i>TP63</i>							
	N 885	58	P = 2.579 ^{ns}	2878	136	37	6
	% 23.29	29.00		75.74	68.00	0.97	3.00
<i>EGFR</i>							
	N 298	12	P = 1.067 ^{ns}	3433	187	171	1
	% 7.59	6.00		88.03	93.50	4.38	0.50
<i>FGFR1</i>							
	N 928	68	P = 4.172 ^{ns}	2833	121	46	1
	% 24.38	34.00		74.41	60.50	1.21	0.50
<i>MYC</i>							
	N 918	62	P = 4.812 ^{ns}	2849	135	33	2
	% 24.00	31		75.00	67.50	0.01	1.00
<i>CDKN2A</i>							
	N 183	6	P = 17.702 ^{ns}	3649	194	68	0
	% 4.69	3.00		93.56	97.00	1.74	0.00
<i>YES1</i>							
	N 1381	62	P = 2.171 ^{ns}	2407	136	12	2
	% 36.34	31.00		63.34	68.00	0.32	1.00
<i>NCOA3</i>							
	N 45	8	P = 3.627 ^{ns}	2366	130	8	0
	% 1.86	5.80		97.81	94.20	0.33	0.00
<i>CEN3</i>							
	N 683	54	P = 0.470 ^{ns}	2510	145	7	1
	% 21.0	27.0		78.44	72.5	0.56	0.50
<i>CEP7</i>							
	N 1637	56	P = 0.00+*	1509	1143	54	1
	% 51.16	28.0		47.16	71.50	1.68	0.50
<i>CEP9</i>							
	N 1400	46	P = 0.00+*	1468	154	332	0
	% 43.75	23.0		45.87	77.0	10.38	0.00

CM, chagasic megaesophagus; NM, normal mucosa; SD, standard-deviation; Statistical Analysis: t-Student; *, P < 0.05; ns, P > 0.05; ^a, ^b, P = 0.008.

pre-cancerous cells to malignancy [25,26]. Genetic and epigenetic alterations in *CDKN2A* have been reported in early stages of esophageal carcinogenesis [27-30]. In primary esophageal carcinomas and cell lines, deletions and point mutations in *CDKN2A* gene have been reported in 16% to 82% of cases [22,31], and hypermethylation of promoter region in 20% to 88% of ESCC and precancerous lesions [30,32]. The current study detected deletion of *CDKN2A* and CEP 9 sequences in

Table 3 Comparison between matched gene and centromere targets, in chagasic megaesophagus and normal mucosa groups.

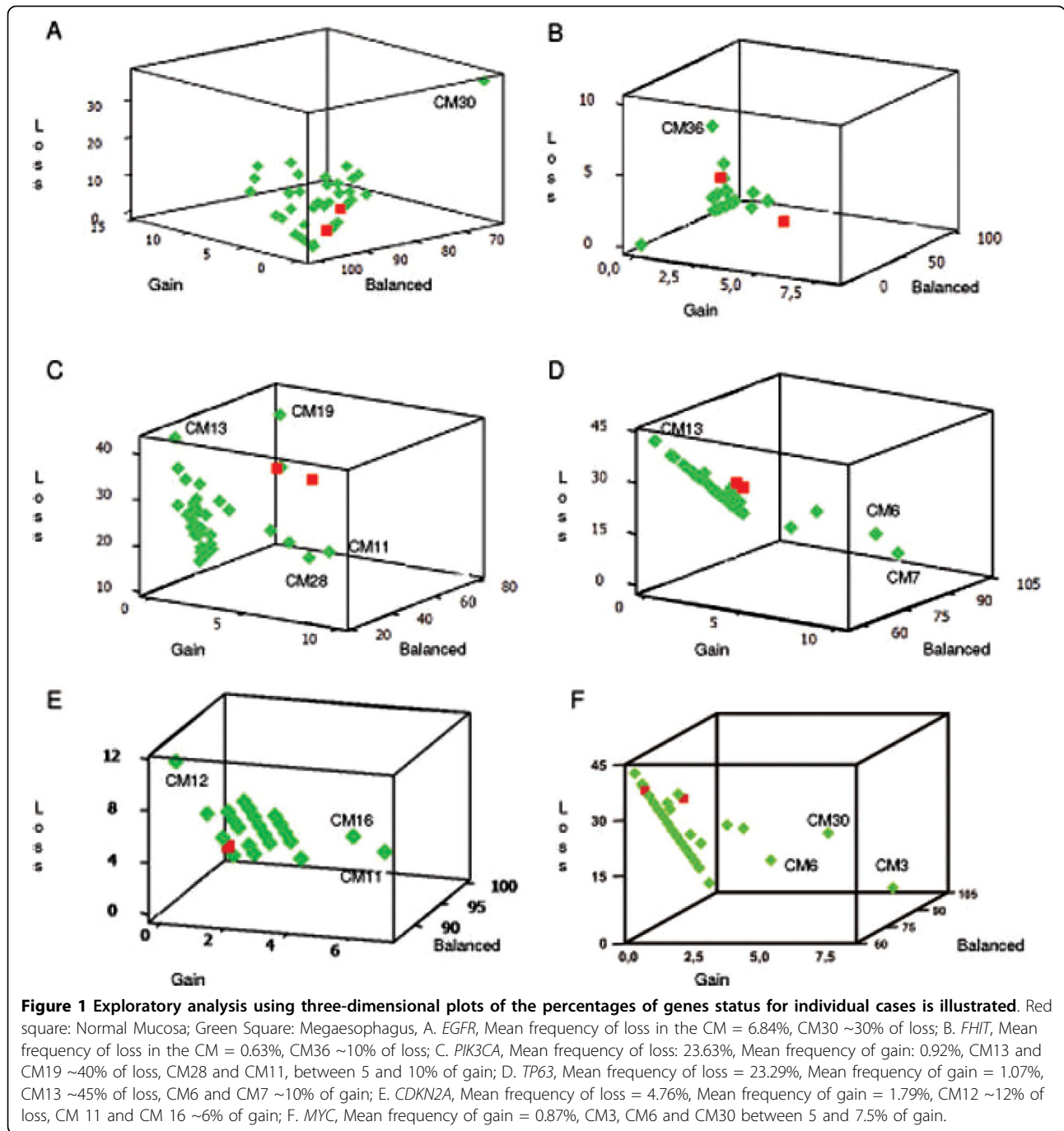
Gene-Centromere	CM		NM	
	Mean ± SD	Ratio	Mean ± SD	Ratio
<i>FHIT</i>	1.77 ± 0.08	1.00	1.74 ± 0.04	1.00
<i>CEN3</i>	1.77 ± 0.08		1.74 ± 0.08	
t-Student	ns		ns	
<i>EGFR</i>	1.49 ± 0.12	0.98	1.67 ± 0.01	0.96
<i>CEP7</i>	1.51 ± 0.13		1.73 ± 0.02	
t-Student	ns		ns	
<i>CDKN2A</i>	1.51 ± 0.09	1.00	1.74 ± 0.07	0.98
<i>CEP9</i>	1.54 ± 0.10		1.77 ± 0.10	
t-Student	ns		ns	

Chagasic megaesophagus, CM; normal mucosa, NM; SD, standard-deviation; Statistical Analysis: t-Student ns, p > 0.05.

CM compared with NM group. In agreement with these findings, patients with idiopathic achalasia and chagasic megaesophagus, with or without esophageal carcinoma, showed reductions in expression of p16 protein [7] and Bellini *et al.* [33] observed a marginal decrease in p16 protein expression in chagasic megaesophagus. Additionally, recent subset analyses by our group did not find mutations in *CDKN2A* (exons 1 and 2) and *FHIT* (exons 5 and 7) genes, suggesting these events are uncommon in CM [34], and have detected copy number changes of chromosomes 7, 11 and 17 and *TP53* deletion by FISH [35].

The tumor suppressor gene *FHIT* (3p14.2) is deregulated during the development of ESCC. Deletion in both *FHIT* alleles results in failure in the transcript [36] and consequent absence or reduction of Fhit protein, which act in the cell cycle regulation and apoptosis. Genetic and epigenetic alterations of *FHIT* are associated with development of several cancer types [37,38]. Loss of heterozygosity (LOH) in areas of the 3p14-p21 bands has also been reported in low-grade dysplasia and postulated as early events in esophageal carcinogenesis [39]. While hypermethylation of *FHIT* gene has been described in 33% to 69.4% of ESCC cases, it is also known that deletion and loss of protein expression are frequent in esophageal carcinoma [32,36]. Deletion of *FHIT* observed in a single megaesophagus specimen in the present study may associate with early onset of genetic changes in these lesions, but it is worth to note that no significant decrease in the level of Fhit protein expression have been detected in chagasic megaesophagus [33].

All other tested genes are categorized as oncogenes and have been previously shown to associate with ESCC, in which they are commonly amplified [12-19]. However, abnormal copy number patterns were only seen in few individuals in the Chagasic megaesophagus



cohort and involved both gains and losses. One example is *PIK3CA*, which encodes the catalytic subunit that uses ATP to phosphorylate phosphatidylinositol, a gene that is frequently amplified in ESCC [40-42]. Yen et al. [40] determined in FISH assays that *PIK3CA* was amplified in cell lines and primary tumors and detected a positive correlation between amplification and tumor size, lymph node metastasis and clinical stage. Yang et al. [41] showed that *PIK3CA* gene amplification was

highly correlated with protein overexpression, supporting amplification as a major mechanism for overexpression. Nevertheless, in this study *PIK3CA* was lost rather than amplified in the CM specimens as a group while involved in marginal level of loss two specimens and gained in two other specimens.

Gene amplification was one of the basic mechanisms leading to overexpression of the *TP63* in ESCC [18,43,44]. The amplification of *TP63*, whose protein

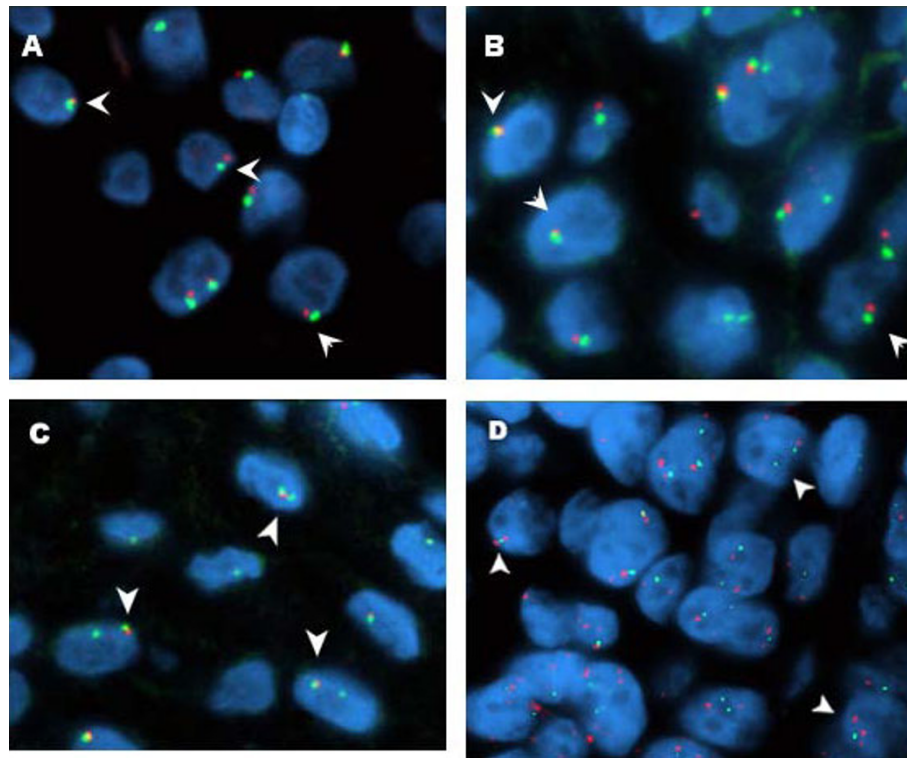


Figure 2 FISH images for the unbalanced genes and centromeric targets in the megaesophagus specimens. Dual-target, dual-color color hybridization in chagasic megaesophagus. A. Loss of *CDKN2A* (red signal) and centromere 9 (green signal); B. Loss of *EGFR* (red signal) and centromere 7 (green signal); C. Loss of *FHIT* (red signal) and centromere 3 (green signal); D. Gain of *TP63* (red signal) and loss of *PIK3CA* (green signal). Arrows indicated cells with abnormal copy numbers of the genes.

plays in the development and maintenance of stratified epithelial tissues has been described in early stage of ESCC carcinogenesis but down-regulated in advanced [18,43]. Amplification of the membrane receptor genes *EGFR* and *FGFR1* has been reported in various cancers including ESCC [45,46], and this phenomenon has been suggested to be a poor prognostic factor in solid tumors [47]. In ESCC, co-expression of both *aFGF* and *FGFR1* was associated with larger tumor area and worse prognosis which suggests that the membrane receptor may promote proliferation of esophageal cancer cells in an angiogenesis-independent and autocrine manner and may contribute to rapid recurrence after esophageal resection [47].

MYC is a transcription factor that binds E-boxes as a heterodimer with Max in about 15% of all genes, and recruits co-activators to regulate gene transcription. *MYC* is regulated in part through mitogenic stimuli and is activated constitutively in cancer cells through gene amplification, chromosomal translocation, point mutation and mitogenic stimulation [48]. *MYC* was found to be amplified in ESCC cell lines and in primary tumors [14]. *YES1* codes a protein with tyrosine kinase activity

that has been previously associated with esophageal carcinogenesis [15,42]. Similarly, the *NCOA3* gene encoding a nuclear receptor coactivator that interacts with nuclear hormone receptors to enhance their transcriptional activator function was found frequently overexpressed and also amplified in 5 to 15% of ESCCs [49-51].

Although is well established that megaesophagus preferentially affects males between the second and fourth decades of life [3], this study has not detected relationship between copy numbers of each tested gene and parameters such as age, gender, life style factors (tobacco smoking and alcoholism) and megaesophagus grade in the CM group. Nevertheless these findings may have been impacted by the limited number of samples in each category.

Interestingly, specimens with genomics deletions and gains exhibited mostly more advanced dilation grades. Megaesophagus patients have high variety of esophageal microbiota, which consists mainly of Gram-positive anaerobic bacteria in concentrations that correlated with the degree of esophageal dilation [6,52]. Bacteria in fluid stasis can undergo reduction from nitrates to nitrites

with the production of N-nitrous compounds, which has potent action in esophageal carcinogenesis [52]. High grade megaesophagus present higher dilation and esophageal stasis associated with bacterial proliferation, thus the data suggest that the level of dilation and inflammation of megaesophagus could promote genetic damages and could be related to increased risk of tumor development [4,7,53].

Conclusion

In conclusion, among 40 chagasic megaesophagus comprehensively investigated with a panel of FISH probes, copy number gain was only displayed by three specimens for *MYC*, by one specimen for *FGFR1* and one specimen for *NCOA3*. Loss of *FHIT* and *YES1* was seen in one specimen and of *EGFR* in another. For the remainder genes *CDKN2A*, *PIK3CA* and *TP63*, from one to four specimens each showed copy number gain or loss. In every case the difference was only marginal therefore not providing strong support to a biological impact. These findings show that imbalances involving the genomic regions encompassing gene sequences relevant in esophageal carcinogenesis were not found as significant events in chagasic megaesophagus. Consequently, genomic imbalances are not promising markers for assessment of ESCC risk in chagasic megaesophagus.

List of abbreviations

aFGF: endothelial cell growth factor, alpha; ANOVA: Analysis of Variance; BAC: Bacterial Artificial Chromosomes; Cat. #: Catalog number; *CDKN2A*: cyclin-dependent kinase inhibitor 2A (melanoma, p16: inhibits CDK4); CEN3: Centromere 3; CEP: Research Ethical Committee; CEP7: Centromere 7; CEP9: Centromere 9; CM: patients with histologic diagnosis of chagasic megaesophagus; CONEP: Brazilian National Research Ethics Committee; DAPI: 4', 6'-diamino-2-phenylindole; *EGFR*: epidermal growth factor receptor [erythroblastic leukemia viral (v-erb-b) oncogene homolog, avian]); ESCC: Esophageal squamous cell carcinoma; FFPE: formalin-fixed, paraffin-embedded; *FGFR1*: fibroblast growth factor receptor 1; *FHIT*: fragile histidine triad gene; FISH: Fluorescence In Situ Hybridization; FITC: fluorescein isothiocyanate; HE: Hematoxylin and Eosin stain; LOH: loss of heterozygosity; *MYC*: v-myc myelocytomatosis viral oncogene homolog (avian); *NCOA3*: nuclear receptor coactivator 3; NM: health individuals with histologically normal esophagus; *PIK3CA*: phosphoinositide-3-kinase, catalytic, alpha polypeptide; Q-PCR: Quantitative - Polymerase Chain Reaction; SSC: Sodium chloride, sodium citrate solution; *TP63*: tumor protein p63; Vs: versus; *YES1*: v-yes-1 Yamaguchi sarcoma viral oncogene homolog 1.

Acknowledgements

The authors are grateful to Dr. Kenji Miyazaki and Henrique Oliveira for collecting the biopsies; Dr. Patricia Maluf Cury for providing the tissue blocks and pathology evaluation; Dr. Sebastião Roberto Taboga and Luiz Roberto Faleiros for help with histological sections. We also thank the Brazilian Agency CAPES and the NCI grants U01CA85070, P30-CA46934 and P50 CA58187 for financial and technical support.

Author details

¹UNESP, São Paulo State University, Department of Biology, Campus São José do Rio Preto, SP, Brazil. ²University of Colorado Denver, Department of Medicine/Medical Oncology, Aurora, Colorado, USA. ³UNESP, São Paulo State University, Department of Computer Sciences and Statistics, Campus São José do Rio Preto, SP, Brazil.

Authors' contributions

MFB carried out the probe development, molecular cytogenetic studies and drafted the manuscript. AJM performed the statistical analysis. AES and MVG conceived the study, participated in its design and execution and contributed to the manuscript. All authors read and approved the final manuscript.

Competing interests

The authors declare that they have no competing interests.

Received: 21 July 2009

Accepted: 17 February 2010 Published: 17 February 2010

References

1. WHO, World Health Organization. http://www.who.int/neglected_diseases/diseases/chagas/en/index.html.
2. Moncayo A, Silveira CA: Current epidemiological trends for Chagas disease in Latin America and future challenges in epidemiology, surveillance and health policy. *Mem Inst Oswaldo Cruz* 2009, **104**(1):17-30.
3. Kraichely RE, Farrugia G: Achalasia: physiology and etiopathogenesis. *Dis Esophagus* 2006, **19**:213-223.
4. Bektas A, Yasa MH, Kuzu I, Dogan I, Unal S, Ormeci N: Flow Cytometric DNA analysis and immunohistochemical p53, PCNA and histopathologic study in primary achalasia: preliminary results. *Hepatogastroenterology* 2001, **48**:408-412.
5. Brucher BLD, Stein HJ, Bartels H, Feussner H, Siewert JR: Achalasia and esophageal cancer: incidence, prevalence and prognosis. *World J Surg* 2001, **25**:745-749.
6. Gockel I, Kammerer P, Brieger J, Heinrich UR, Mann WJ, Bittinger F, Eckardt VF, Junginger T: Image cytometric DNA analysis of mucosal biopsies in patients with primary achalasia. *World J Gastroenterol* 2006, **21**:3020-3025.
7. Chino O, Kijima H, Shimada H, Nishi T, Tanaka H, Oshiba G, Kise Y, Kajiwara H, Tsuchida T, Tanaka M, Tajima T, Makuuchi H: Clinicopathological studies of esophageal carcinoma in achalasia: analysis of carcinogenesis using histological and immunohistochemical procedures. *Anticancer Res* 2000, **20**:3717-3722.
8. INCA, Instituto Nacional do Câncer. <http://www.inca.gov.br>.
9. American Cancer Society. http://www.cancer.org/docroot/CRI/content/CRI_2_2_1X_How_many_people_get_esophagus_cancer_12.asp?sitearea=.
10. Kuwano H, Kato H, Miyazaki T, Fukuchi M, Masuda N, Nakajima M, Fukai Y, Sohda M, Kimura H, Faried A: Genetic alterations in esophageal cancer. *Surg Today* 2005, **35**:7-18.
11. D'Amico TA: Molecular biologic staging of esophageal cancer. *Thorac Surg Clin* 2006, **16**(Suppl 4):31-327.
12. Pack SD, Karkera JD, Zhuang Z, Pak ED, Balan KV, Hwu P, Park WS, Pham T, Ault DO, Glaser M, Liotta L, Detera-Wadleigh SD, Wadleigh RG: Molecular cytogenetic fingerprinting of esophageal squamous cell carcinoma by comparative genomic hybridization reveals a consistent pattern of chromosomal alterations. *Genes Chromosomes Cancer* 1999, **25**(2):160-168.
13. Yen CC, Chen YJ, Chen JT, Hsia JY, Chen PM, Liu JH, Fan FS, Chiou TJ, Wang WS, Lin CH: Comparative genomic hybridization of esophageal squamous cell carcinoma: correlations between chromosomal aberrations and disease progression/prognosis. *Cancer* 2001, **92**(11):2769-2777.

14. Ishizuka T, Tanabe C, Sakamoto H, Aoyagi K, Maekawa M, Matsukura N, Tokunaga A, Tajiri T, Yoshida T, Terada M, Sasaki H: **Gene amplification profiling of esophageal squamous cell carcinomas by DNA array CGH.** *Biochem Biophys Res Commun* 2002, **296**(1):152-5.
15. Nakakuki K, Imoto I, Pimkhaokham A, Fukuda Y, Shimada Y, Imamura M, Amagasa T, Inazawa J: **Novel targets for the 18p11.3 amplification frequently observed in esophageal squamous cell carcinomas.** *Carcinogenesis* 2002, **23**(1):19-24.
16. Arai H, Ueno T, Tangoku A, Yoshino S, Abe T, Kawauchi S, Oga A, Furuya T, Oka M, Sasaki K: **Detection of amplified oncogenes by genome DNA microarrays in human primary esophageal squamous cell carcinoma: comparison with conventional comparative genomic hybridization analysis.** *Cancer Genet Cytogenet* 2003, **146**(1):16-21.
17. Shiomii H, Sugihara H, Kamitani S, Tokugawa T, Tsubosa Y, Okada K, Tamura H, Tani T, Kodama M, Hattori T: **Cytogenetic heterogeneity and progression of esophageal squamous cell carcinoma.** *Cancer Genet Cytogenet* 2003, **147**(1):50-61.
18. Yen CC, Chen YJ, Pan CC, Lu KH, Chen PC, Hsia JY, Chen JT, Wu YC, Hsu WH, Wang LS, Huang MH, Huang BS, Hu CP, Chen PM, Lin CH: **Copy number changes of target genes in chromosome 3q25.3-qter of esophageal squamous cell carcinoma: TP63 is amplified in early carcinogenesis but down-regulated as disease progressed.** *World J Gastroenterol* 2005, **11**(9):1267-1272.
19. Wang LD, Qin YR, Fan ZM, Kwong D, Guan XY, Tsao GS, Sham J, Li JL, Feng XS: **Comparative genomic hybridization: comparison between esophageal squamous cell carcinoma and gastric cardia adenocarcinoma from a high-incidence area for both cancers in Henan, northern China.** *Dis Esophagus* 2006, **19**(6):459-67.
20. de Rezende J, Lauer KM, de Oliveira A: **Clinical and radiological aspects of aperistalsis of the esophagus.** *Rev Bras Gastroenterol* 1960, **12**:247-262.
21. Pekarsky Y, Zanesi N, Palamarchuk A, Huebner K, Croce CM: **FHIT: from gene discovery to cancer treatment and prevention.** *Lancet Oncol* 2002, **3**:748-54.
22. Chen PL, Cheng YW, Chiang CC, Tseng SH, Chau PS, Tsai YY: **Hypermethylation of the p16 gene promoter in pterygia and its association with the expression of DNA methyltransferase 3b.** *Molecular Vision* 2006, **12**:1411-1416.
23. Graphpad. <http://www.graphpad.com/instat>.
24. Pelucchi C, Gallus S, Garavello W, Bosetti C, La Vecchia C: **Alcohol and tobacco use, and cancer risk for upper aerodigestive tract and liver.** *Eur J Cancer Prev* 2008, **17**(4):340-344.
25. Mori T, Miura K, Aoki T, Nishihira T, Mori S, Nakamura Y: **Frequent somatic mutation of the MTS1/CDK4I (multiple tumor suppressor/cyclin-dependent kinase 4 inhibitor) gene in esophageal squamous cell carcinoma.** *Cancer Res* 1994, **54**:3396-3397.
26. Nuovo G, Plaia TW, Belinsky SA, Baylin SB, Herman JG: **In situ detection of the hypermethylation-induced inactivation of the p16 gene as an early event in oncogenesis.** *PNAS* 1999, **96**(22):12754-12759.
27. Kato H, Yoshikawa M, Fukai Y, Tajima K, Masuda N, Tsukada K, Kuwano H, Nakajima T: **An immunohistochemical study of p16, pRb, p21 and p53 proteins in human esophageal cancers.** *Anticancer Res* 2000, **20**:345-349.
28. Chang MS, Lee HS, Lee BL, Kim YT, Lee JS, Kim WH: **Differential protein expression between esophageal squamous cell carcinoma and dysplasia, and prognostic significance of protein markers.** *Pathol Res Pract* 2005, **201**(Suppl 6):417-425.
29. Huang H, Wang LF, Tian HM, Liu Y, Li M, Qu P, Wang WR, Zhang W: **Expression of retinoic acid receptor-beta mRNA and p16, p53, Ki67 proteins in esophageal carcinoma and its precursor lesions.** *Zhonghua Zhong Liu Za Zhi* 2005, **27**(3):152-5.
30. Fujiwara S, Noguchi T, Takeno S, Kimura Y, Fumoto S, Kawahara K: **Hypermethylation of p16 gene promoter correlates with loss of p16 expression that results in poorer prognosis in esophageal squamous cell carcinomas.** *Dis Esophagus* 2008, **21**:125-131.
31. Chen J, Guo L, Peiffer DA, Zhou L, Chan OT, Bibikova M, Wickham-Garcia E, Lu SH, Zhan Q, Wang-Rodriguez J, Jiang W, Fan JB: **Genomic profiling of 766 cancer-related genes in archived esophageal normal and carcinoma tissues.** *Int J Cancer* 2008, **122**(10):2249-54.
32. Kim YT, Park JY, Jeon YK, Park SJ, Song JY, Kang CH, Sung SW, Kim JH: **Aberrant promoter CpG island hypermethylation of the adenomatous polyposis coli gene can serve as a good prognostic factor by affecting lymph node metastasis in squamous cell carcinoma of the esophagus.** *Dis Esophagus* 2009, **22**(2):143-50.
33. Bellini MF, Leite KRM, Cury PM, Silva AE: **p53, p16 and Fhit proteins expressions in chronic esophagitis and chagas disease.** *Anticancer Res* 2008, **28**(Suppl 6B):3793-3799.
34. Manoel-Caetano FS, Silveira AFP, Silva AE: **Gene mutations in esophageal mucosa of Chagas disease patients.** *Anticancer Res* 2009, **29**(Suppl 4):1243-1247.
35. Manoel-Caetano F, da S, Borim AA, Caetano A, Cury PM, Silva AE: **Cytogenetic alterations in chagasic achalasia compared to esophageal carcinoma.** *Cancer Genet Cytogenet* 2004, **149**(1):17-22.
36. Druck T, Hadaczek P, Fu TB, Ohta M, Sivrashvili Z, Baffa R, Negrini M, Kastury K, Veronese ML, Rosen D, Rothstein J, McCue P, Cotticelli MG, Inoue H, Croce CM, Huebner K: **Structure and expression of the human FHIT gene in normal and tumor cells.** *Cancer Res* 1997, **57**:504-512.
37. Mori M, Mimori K, Shiraishi T, Alder H, Inoue H, Tanaka Y, Sugimachi K, Huebner K, Croce CM: **Altered expression of Fhit in carcinoma and precarcinomatous lesions of the esophagus.** *Cancer Res* 2000, **60**:1177-1182.
38. Kuroki T, Trapasso F, Yendamuri S, Matsuyama A, Alder H, Mori M, Croce CM: **Allele loss and promoter hypermethylation of VLH, RAR-beta, RASSF1A, and FHIT tumor suppressor genes on chromosome 3p in esophageal squamous cell carcinoma.** *Cancer Res* 2003, **63**:3724-3728.
39. Roth MJ, Abnet CC, Hu N, Wang QH, Wei WQ, Green L, D'Alelio M, Qiao YL, Dawsey SM, Taylor PR, Woodson K: **p16, MGMT, RARbeta2, CLDN3, CRBP and MT1G gene methylation in esophageal squamous cell carcinoma and its precursor lesions.** *Oncol Rep* 2006, **15**(6):1591-1597.
40. Yen CC, Chen YJ, Lu KH, Hsia JY, Chen JT, Hu CP, Chen PM, Liu JH, Chiou TJ, Wang WS, Yang MH, Chao TC, Lin CH: **Genotypic analysis of esophageal squamous cell carcinoma by molecular cytogenetics and real-time quantitative polymerase chain reaction.** *Int J Oncol* 2003, **23**(4):871-881.
41. Yang YL, Chu JY, Luo ML, Wu YP, Zhang Y, Feng YB, Shi ZZ, Xu X, Han YL, Cai Y, Dong JT, Zhan QM, Wu M, Wang MR: **Amplification of PRKCI, located in 3q26, is associated with lymph node metastasis in esophageal squamous cell carcinoma.** *Genes Chromosomes Cancer* 2008, **47**(2):127-136.
42. NCBI, National Center for Biotechnology Information. <http://www.ncbi.nlm.nih.gov/sites/entrez>.
43. Hibi K, Trink B, Patturajan M, Westra WH, Caballero OL, Hill DE, Ratovitski EA, Jen J, Sidransky D: **AIS is an oncogene amplified in squamous cell carcinoma.** *Proc Natl Acad Sci USA* 2000, **97**(Suppl 10):5462-5467.
44. Hu H, Xia SH, Li AD, Xu X, Cai Y, Han YL, Wei F, Chen BS, Huang XP, Han YS, Zhang JW, Zhang X, Wu M, Wang MR: **Elevated expression of p63 protein in human esophageal squamous cell carcinomas.** *Int J Cancer* 2002, **102**:580-583.
45. Sunpaweravong P, Sunpaweravong S, Puttawibul P, Mitarnun W, Zeng C, Barón AE, Franklin W, Said S, Varella-Garcia M: **Epidermal growth factor receptor and cyclin D1 are independently amplified and overexpressed in esophageal squamous cell carcinoma.** *J Cancer Res Clin Oncol* 2005, **131**(2):111-119.
46. Hanawa M, Suzuki S, Dobashi Y, Yamane T, Kono K, Enomoto N, Ooi A: **EGFR protein overexpression and gene amplification in squamous cell carcinomas of the esophagus.** *Int J Cancer* 2006, **118**(Suppl 5):1173-1180.
47. Sugiura K, Ozawa S, Kitagawa Y, Ueda M, Kitajima M: **Co-expression of aFGF and FGFR-1 is predictive of a poor prognosis in patients with esophageal squamous cell carcinoma.** *Oncol Rep* 2007, **17**(3):557-564.
48. Adhikary S, Eilers M: **Transcriptional regulation and transformation by Myc proteins.** *Nat Rev Mol Cell Biol* 2005, **6**:635-645.
49. Fujita Y, Sakakura C, Shimomura K, Nakanishi M, Yasuoka R, Aragane H, Hagiwara A, Abe T, Inazawa J, Yamagishi H: **Chromosome arm 20q gains and other genomic alterations in esophageal squamous cell carcinoma, as analyzed by comparative genomic hybridization and fluorescence in situ hybridization.** *Hepatogastroenterol* 2003, **50**(Suppl 54):1857-1863.
50. Xu FP, Xie D, Wen JM, Wu HX, Liu YD, Bi J, Lv ZL, Zeng YX, Guan XY: **SRC-3/AIB1 protein and gene amplification levels in human esophageal squamous cell carcinomas.** *Cancer Lett* 2005, **245**(1-2):69-74.
51. Xu FP, Liu YH, Zhuang HG, Li L, Luo XL, Wen JM: **Role of AIB1 gene in development of esophageal squamous cell carcinoma and its clinicopathologic significance.** *Zhonghua Bing Li Xue Za Zhi* 2008, **37**(4):250-254.

52. Pajeccki D, Zilberstein B, dos Santos MA, Ubriaco JA, Quintanilha AG, Cecconello I, Gama-Rodrigues J: **Megaesophagus Microbiota: A Qualitative and Quantitative Analysis.** *Journal of Gastrointestinal Surgery* 2002, **6**:723-729.
53. Lehman MB, Clark SB, Ormsby AH, Rice TW, Richter JE, Goldblum JR: **Squamous mucosal alterations in esophagectomy specimens from patients with end-stage achalasia.** *Am J Surg Pathol* 2001, **25**:1413-1418.

Pre-publication history

The pre-publication history for this paper can be accessed here:<http://www.biomedcentral.com/1471-230X/10/20/prepub>

doi:10.1186/1471-230X-10-20

Cite this article as: Bellini *et al.*: Chromosomal imbalances are uncommon in chagasic megaesophagus. *BMC Gastroenterology* 2010 10:20.

**Submit your next manuscript to BioMed Central
and take full advantage of:**

- Convenient online submission
- Thorough peer review
- No space constraints or color figure charges
- Immediate publication on acceptance
- Inclusion in PubMed, CAS, Scopus and Google Scholar
- Research which is freely available for redistribution

Submit your manuscript at
www.biomedcentral.com/submit

