

Research article

Open Access

## Differential gene expression in the murine gastric fundus lacking interstitial cells of Cajal

Yataro Daigo<sup>†1,2</sup>, Ichiro Takayama<sup>\*†1</sup>, Bruce AJ Ponder<sup>2</sup>, Carlos Caldas<sup>2</sup>, Sean M Ward<sup>3</sup>, Kenton M Sanders<sup>3</sup> and Masayuki A Fujino<sup>1</sup>

Address: <sup>1</sup>Department of Medicine, University of Yamanashi Faculty of Medicine, Japan, <sup>2</sup>Cancer Genomics Program, Department of Oncology, University of Cambridge School of Medicine, Cambridge, UK and <sup>3</sup>Department of Physiology and Cell Biology, University of Nevada School of Medicine, USA

Email: Yataro Daigo - yatarod@hotmail.com; Ichiro Takayama\* - ichirot@is.icc.u-tokai.ac.jp; Bruce AJ Ponder - bajp@mole.bio.cam.ac.uk; Carlos Caldas - cc234@cam.ac.uk; Sean M Ward - sean@physio.unr.edu; Kenton M Sanders - kent@physio.unr.edu; Masayuki A Fujino - mfujino@res.yamanashi-med.ac.jp

\* Corresponding author †Equal contributors

Published: 10 June 2003

Received: 20 December 2002

BMC Gastroenterology 2003, 3:14

Accepted: 10 June 2003

This article is available from: <http://www.biomedcentral.com/1471-230X/3/14>

© 2003 Daigo et al; licensee BioMed Central Ltd. This is an Open Access article: verbatim copying and redistribution of this article are permitted in all media for any purpose, provided this notice is preserved along with the article's original URL.

### Abstract

**Background:** The muscle layers of murine gastric fundus have no interstitial cells of Cajal at the level of the myenteric plexus and only possess intramuscular interstitial cells and this tissue does not generate electric slow waves. The absence of intramuscular interstitial cells in  $W/W^V$  mutants provides a unique opportunity to study the molecular changes that are associated with the loss of these intercalating cells.

**Method:** The gene expression profile of the gastric fundus of wild type and  $W/W^V$  mice was assayed by murine microarray analysis displaying a total of 8734 elements. Queried genes from the microarray analysis were confirmed by semi-quantitative reverse transcription-polymerase chain reaction.

**Results:** Twenty-one genes were differentially expressed in wild type and  $W/W^V$  mice. Eleven transcripts had 2.0–2.5 fold higher mRNA expression in  $W/W^V$  gastric fundus when compared to wild type tissues. Ten transcripts had 2.1–3.9 fold lower expression in  $W/W^V$  mutants in comparison with wild type animals. None of these genes have ever been implicated in any bowel motility function.

**Conclusions:** These data provides evidence that several important genes have significantly changed in the murine fundus of  $W/W^V$  mutants that lack intramuscular interstitial cells of Cajal and have reduced enteric motor neurotransmission.

### Background

Interstitial cells of Cajal (ICC) are gastrointestinal (GI) pacemaker cells and intermediaries in enteric motor neurotransmission in the GI tract [1,2]. ICC express *KIT/c-kit* and depend on signalling via the gene product protein, KIT, a receptor tyrosine kinase which is essential for devel-

opment and maintenance of the ICC phenotype [3]. Mutations in the *white-spotting* locus (i.e.  $W/W^V$ ) result in reduced KIT expression. These mutant animals develop few ICC at the level of the myenteric plexus (IC-MY) in the small intestine and the reduced ICC numbers is associated with a loss of slow wave activity. Intramuscular ICC (IC-

IM) located in the stomach, lower esophageal and pyloric sphincters are absent in  $W/W^V$  mutant animals [4]. Reduced numbers of ICC have also been reported in several GI motility disorders, such as chronic intestinal pseudo-obstruction [5,6], infantile hypertrophic pyloric stenosis [7–9], Hirschsprung's disease [10–12], slow-transit constipation and certain forms of gastroparesis [13,14].

The association between motility disorders and loss of specific populations of ICC suggests that a more complete understanding of the molecular and cell biology of ICC networks within the gastrointestinal tract may help in understanding the etiology of some GI motor pathologies. The aim of the present study was to characterize genetic sequences that are expressed in ICC of the stomach that may encode important functional elements of the GI pacemaker/motor neurotransmission system. We pursued the hypothesis that such genes might show differential expression in the small intestines of wild type mice and  $W/W^V$  mice [15,16]. We previously identified fifteen known and novel genes that were differentially expressed in the small intestines of wild type and  $W/W^V$  mice, which develop few IC-MY using a differential gene expression method [17,18].

In the present study we hypothesized that there may also be differential expression of genes in the gastric fundus of  $W/W^V$  mice, where IC-IM are lost. Our gene microarray analysis successfully identified 21 genes that were differentially expressed in the fundus of  $W/W^V$  mice. The differential expression of these mice was confirmed by semi-quantitative reverse transcription-polymerase chain reaction (RT-PCR).

## Methods

### Animals and Tissue Preparation

The use and treatment of experimental animals was approved by the Guideline governing Animal Experiment Committee at the University of Yamanashi School of Medicine and at the University of Nevada School of Medicine. Six adult male WBB6F1-+/+ mice (wild type) and age matched six adult male WBB6F1- $W/W^V$  mice, weighing 20 to 30 g, were purchased from Japan SLC Inc (Shizuoka, Japan). They were anesthetized with ether or carbon dioxide inhalation and sacrificed by cervical dislocation. For gene analyses, stomachs were removed from the animal and the mucosa with the attached submucosa rapidly sharp dissected from the *tunica muscularis*. Tissues were subsequently frozen in liquid nitrogen (-196 °C). Tissues were stored at -80 °C until isolation of RNA was preformed [18].

### RNA Preparation and Microarray Data Analysis

For gene microarray analysis, poly (A)+ RNA was isolated from each tissue sample by TRIZOL (Life Technologies,

Inc., Gaithersburg, MD, USA) and Poly (A)+Isolation Kit from Total RNA (ISOGEN, Nippon Gene, Tokyo, Japan).<sup>18</sup> Before starting microarray analysis, differential gene expression of *KIT* between the gastric fundic tissues of wild type mice and those of  $W/W^V$  mutant mice were confirmed by semi-quantitative RT-PCR (See the section of *Semi-quantitative RT-PCR*) (Fig. 1A). Microarrays were hybridized and scanned, and image analysis was performed as described previously [19,20]. In brief, alterations in gene expression were evaluated by reverse transcription of poly (A)+ RNAs in the presence of Cy3 or Cy5 fluorochromes followed by hybridization to mouse GEM 1 microarray chips (Incyte Genomics, Inc., Porter Drive Palo Alto, CA, USA). To confirm the validity of the assay, the experiments were performed in duplicate. The 8734 cDNAs we used represent 7854 unique genes/UniGene clusters: 3205 are annotated and 4649 are unannotated sequences. We assigned a cut-off value, using a variance analysis, to the microarray slide. Genes whose Cy3- and Cy5-signal intensities were lower than the cut-off values were excluded from further investigation. Balanced differential expression was determined for control wild type mice versus  $W/W^V$  mutant mice. Values that were < -2.0 or > 2.0 in both two independent experiments were considered significant and the mean values of the relative fluorescence ratio for each gene were calculated.

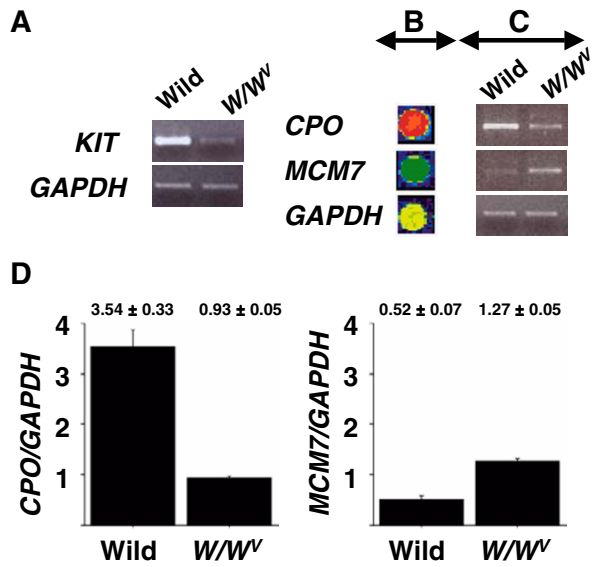
### Semi-quantitative RT-PCR

The levels of mRNA expression that were decreased or increased by > 2.0-fold or greater, were confirmed by semi-quantitative RT-PCR from fundus of 6 of each wild type mice and  $W/W^V$  mice. RT-PCR was performed as described previously [18]. In brief, 2 µg aliquots of total RNAs treated with DNase I (Roche Diagnostics, Basel, Switzerland) from the mice fundic tissues were used to synthesize single-strand cDNAs. These cDNAs were used as templates for PCR in a thermal cycler (PerkinElmer, Shelton, CT, USA), using primers listed in Table 1 or *KIT* (5'-ATG ACG TCA TGA AGA CTT GCT-3' and 5'-CTA CCC TGG AAT AGG ATG CA-3'), and *GAPDH* specific primer sets (5'-GACAACAGCCTCAAGATCATCA-3' and 5'-GGTCCACCACTGACACTGTG-3'). Expression of *GAPDH* served as an internal control. Primers were derived from different exons in the same gene, when the corresponding mouse genomic sequence was available at that time. The PCR reactions were optimized for number of cycles to ensure product intensity within the linear phase of amplification.

## Results

### Microarray Analysis and Semi-quantitative RT-PCR

To identify genes that may be selectively associated with IC-IM, we compared gene expression patterns in gastric fundic tissues derived from wild type and  $W/W^V$  mice utilizing a gene microarray method [19,20]. Murine fundus



**Figure 1**  
**A.** Expression of *KIT* gene using semi-quantitative RT-PCR, in gastric fundic tissues from wild type and *W/W<sup>V</sup>* mutant mice maintained under *fasted* conditions. *GAPDH* levels were measured as a control. **B.** Representative image of DNA microarray hybridization. Alterations in gene expression that were represented by the ratio of intensity of fluorescence measured using Cy3 and Cy5 fluorochromes. Expression profiles were evaluated by reverse transcription of poly (A)+ RNAs from gastric fundic muscles from wild type and *W/W<sup>V</sup>* mice in the presence of Cy3 or Cy5 fluorescent labeling dyes followed by hybridization to mouse GEM 1 microarrays. The image shown was produced by superimposing the Cy5 fluorescence image (pseudo-coloured green that represents expression level of RNA from the *tunica muscularis* of *W/W<sup>V</sup>* fundus) and the Cy3 fluorescence image (pseudo-coloured red that represents RNA expression from wild type tissues). Arrays were counterstained with DAPI (blue). **C.** Confirmation of the reliability of the microarray data by semi-quantitative RT-PCR. Representative examples of RT-PCR analysis, in fundic tissues from six wild type and six *W/W<sup>V</sup>* mutant mice maintained under starved conditions. Expression of the *CPO* gene was considerably reduced in the fundus of *W/W<sup>V</sup>* mice compared to age matched wild type mice, whereas the *MCM7* gene showed an increase in expression in *W/W<sup>V</sup>* mice. **D.** Relative expression level of *CPO* (*CPO/GAPDH*) and *MCM7* (*MCM7/GAPDH*) in fundic tissues from six wild type and six *W/W<sup>V</sup>* mutant mice. The data represent the mean (± SD) of six different RT-PCR experiments using six wild type or *W/W<sup>V</sup>* fundus RNA as templates.

the mouse GEM 1 microarray. Results of this experiment, highlighting genes that were reproducibly decreased or increased by > 2.0-fold or greater, are shown in Table 2 and Fig. 1B. Several known and novel genes were differentially expressed in the fundus of *W/W<sup>V</sup>* mice (> 2.0 balanced differential expression). To confirm the differential expression profiles, we further examined the expression levels in murine fundic mRNA derived from wild types and *W/W<sup>V</sup>* mice maintained under *fasted* conditions as templates, using semi-quantitative RT-PCR analysis (Representative data were shown in Fig. 1C,1D. All primer sets used for the confirmation were listed in Table 1). Expression of ten genes was considerably reduced in the gastric fundus of *W/W<sup>V</sup>* mice compared to age matched wild type mice. Another eleven genes showed an increase in expression in *fasted W/W<sup>V</sup>* mice.

**Discussion**

A comparison of differentially expressed genes from the fundus of *W/W<sup>V</sup>* mice using DNA microarray analysis revealed that the expression of eleven genes transcripts were significantly up-regulated in *W/W<sup>V</sup>* mice, whereas ten genes transcripts were dramatically suppressed in these animals. We confirmed these results with semi-quantitative RT-PCR of tissues from six each of wild type and *W/W<sup>V</sup>* mice. Data obtained from these experiments suggest that expression of the genes were specifically regulated in *W/W<sup>V</sup>* mice.

The eleven genes that were up-regulated in the gastric fundus of *W/W<sup>V</sup>* mice were identified as *MCM7*, *p160 ROCK2*, *BST1/BP3*, *RBP2*, and another seven unannotated transcripts. *MCM7* is a mammalian homologue of the yeast nuclear protein *MCM2/CDC47*, which is thought to play an important role in two crucial steps of the cell cycle, namely, onset of DNA replication and cell division [21,22]. *p160 ROCK2*, which is an isozyme of *ROCK1* is a target for the small GTPase, *Rho* [23]. *ROCK2* is a serine/threonine kinase that regulates cytokinesis, smooth muscle contraction, the formation of actin stress fibers and focal adhesions, and the activation of the *FOS* serum response element [24]. The up-regulation of *p160 ROCK2* may have a compensating effect for the loss of ICC-dependent mechanisms in the gastric fundus. The *BST1/BP3*, a bone marrow stromal cell surface antigen, is a variably glycosylated glycosyl-phosphatidylinositol (GPI)-linked molecule that is selectively expressed by early B and T lineage cells and a discrete subpopulation of reticular cells in the peripheral lymphoid organs. It is also expressed on the brush border of intestinal epithelial cells, the luminal surface of renal collecting tubules and mature myeloid cells [25]. This protein is supposed to belong to ADP-ribosyl cyclase family [26]. Cellular *RBP2* is an abundant 134-residue protein present in the small intestinal epithelium [27]. It is thought to participate in the uptake

without epithelial tissues derived from wild type and *W/W<sup>V</sup>* mice maintained under *fasted* conditions were used to generate poly (A)+ mRNA for microarray analysis using

**Table 1: Primer sets used for semi-quantitative RT-PCR.**

Gene Name	Accession No.	Forward Primer	Reverse Primer
EST	AA185701	CGA AAG CCT TGA GGT TGA AG	TAG GAA AAC AGG CGT CAC TG
EST	AA166336	GAA GAA AAG GCT GCA GAT CG	CAA GAG GCA AAG AGC AAT CC
EST	AA021806	CAC GAA TTG CAG GAC TAC CT	ACC TGC ACT GTA GGC TGA GT
<i>MCM7</i>	Q61881	GCC CAC TGG ATT GTG AAG AT	AGG AGA CTG GTC CAC ACC AC
<i>p160 ROCK2</i>	U58513	AAG AAC CTG TCA AGC GTG GT	TCC AGG GTC ATC TGG AGT TC
EST	W18585	AGA CTT GGT GGC AGA GGA GA	GCA GCT CAT GAC AGA ACA CC
EST	AA403748	CCT AAA GCA ACC CAA CCT GA	TAG CCT TAT GGG ACC TGG TG
<i>BST1/BP3</i>	Q64277	GAT TTC TTG AGC TGG TGT CG	AAA ACC CTC TCG TGG GAT AG
EST	AA024250	CAG ATA GAG CAA GGG ATG GA	CTG AGC CCA AAC CAG TAG AA
<i>RBP2</i>	Q08652	GAC GAA GGA CCA AAA TGG AA	CGG TGA AAT CCA GGT CGT AG
EST	W46016	AGC AAC AAC AGC TGG ACT TC	ACC TTC TGT TTG GTG CTG AG
<i>BPI/6C3</i>	S30398	TAT CGG CCT CAT CTA ACC AG	ATC TTC AAG CAG CAC CTG AC
EST	AI552444	CAT GCG ATA CTG GAA CAT GA	TGA CTC CAA ATA GCC CTC AG
EST	AA108876	TGG AGC AAG AGA GGA AAG TG	CTA GAC CTG AGC TTG CCT TG
EST	AA049294	ACG TGG AGA AAG TTC TCG TG	GCA ATA GTG TCA CCG AAT CC
EST	AA254777	GCC CTG GAG TTG AGA CTG TA	TGA CAA GCT GCA CAG TAA CC
<i>RHAMM</i>	AF031932	GCA GAA GGA GGA GCA GAG TG	GCA GTG ACG TCC CTC AGA CT
EST	AA002293	AAG TCT TTG TGT GGG CTG AG	AGG AAG CTT CGT CTC TCC AT
EST	AI595081	CAC CAG GAT GTC TGC CTA CT	CCG AGA TCA TGT TCT TCA CC
<i>CPO</i>	D16333	GAA GAC CAA GAT GGA GCT GA	CAG AAA GAT TCC CAT GAA CG
EST	AA000304	TTC ATC TGC TGC TCC TTC TC	TTA TAG ACC TTC CCG CAC AG

**Table 2: Analysis of gene expression in the fundus of wild type and *W/W<sup>V</sup>* mice**

Gene Name	<i>W/W<sup>V</sup></i> /wildtype ratio <sup>(a)</sup>	Accession No.	Subcellular location <sup>(b)</sup>	Cytoband <sup>(c)</sup>
EST	2.5	AA185701		
EST	2.5	AA166336		
EST	2.4	AA021806		
<i>MCM7</i> : DNA Replication Licensing Factor	2.4	Q61881	nucleus	7q21.3-q22.1
<i>p160 ROCK2</i> : Rho-Associated Protein Kinase	2.3	U58513	cytoskeleton	2p24
EST	2.3	W18585		
EST	2.3	AA403748		
<i>BST1/BP3</i> : ADP-Ribosyl Cyclase 2 Precursor	2.0	Q64277	membrane	4p15
EST	2.0	AA024250		
<i>RBP2</i> : retinol binding protein 2, cellular	2.0	Q08652	cytoplasm	3q23
EST	2.0	W46016		
<i>BPI/6C3</i> : Glutamyl Aminopeptidase	-2.1	S30398	membrane	16
EST	-2.2	AI552444		
EST	-2.3	AA108876		
EST	-2.4	AA049294		
EST	-2.4	AA254777		
<i>RHAMM</i> : Hyaluronan-Mediated Motility Receptor	-2.5	AF031932	membrane	5q33.2-qter
EST	-2.5	AA002293		
EST	-3.4	AI595081		
<i>CPO</i> : Coproporphyrinogen Oxidase	-3.6	D16333	mitochondria	3q12
EST	-3.9	AA000304		

(a) Balanced differential expression for control wild type mice vs *W/W<sup>V</sup>* mutant mice. Values that were decreased or increased by > 2-fold or greater in both two independent experiments were considered significant and the mean values were calculated. All of the results were confirmed with semi-quantitative RT-PCR using fundic tissues from six wild type and six *W/W<sup>V</sup>* mutant mice. (b) Subcellular location determined by the SOURCE program <http://source.stanford.edu>. (c) Human chromosomal localization of the gene.

and/or intracellular metabolism of vitamin A and belong to a protein family that contains liver fatty acid-binding protein. Vitamin A is a fat-soluble vitamin necessary for growth, reproduction, differentiation of epithelial tissues, and vision. Mammals depend on intestinal absorption of this vitamin for their survival. RBP2, which is confined largely to the small intestinal enterocyte, probably plays an important role in the intestinal absorption and/or metabolism of vitamin A [27].

We also confirmed the down-regulation of ten genes in *W/W<sup>V</sup>* mice: *BP1/6C3*, *RHAMM*, *CPO*, and another seven unannotated ESTs. The murine  $\beta$ -lymphocyte differentiation antigen, BP1/6C3 was characterized as glutamyl aminopeptidase, which is reported to serve as cell-differentiation marker of lymphomyelocytic lineages and may be involved in cell activation, signal transduction, and cell-matrix adhesion. It is also expressed by capillary endothelial cells, placenta, and epithelial cells of the intestine and proximal renal tubules [28]. *RHAMM* encodes a hyaluronan receptor protein [29]. When hyaluronan binds to *RHAMM*, the phosphorylation of a number of proteins including the focal adhesion kinase pp125-FAK occurs [30]. This is a necessary step for disassembly of focal contacts and subsequent motility. *CPO* is the sixth enzyme of the heme biosynthetic pathway. This soluble protein is localized in the intermembrane space of mitochondria and catalyzes the conversion of two propionate groups at positions two and four of coproporphyrinogen III to two vinyl groups of protoporphyrinogen IX [31]. It was reported that coproporphyrin (CPO deficiency) patients showed constipation and abnormal colic that are main symptoms of this disease [32]. Marked elevation of coproporphyrin in the feces differentiated the condition from the Swedish type in which stool porphyrins are usually normal and from variegate porphyria in which both coproporphyrin and protoporphyrinogen fractions are increased in the stool [33].

In the 21 genes identified, we determined the subcellular localization and human chromosomal mapping of the 7 known genes using the SOURCE program <http://source.stanford.edu> (Table 2). These genes showed a variety of cellular localization including 3 membrane, 2 cytoplasmic, 1 mitochondrial and 1 nuclear proteins. Further analyses of these genes might enable us to elucidate not only their relationship with the KIT, a receptor tyrosine kinase, but also the molecular aspects of GI pacemaker system.

We previously identified fifteen genes that were differentially expressed in the small intestines of wild type and *W/W<sup>V</sup>* mice which develop few IC-MY using a differential gene expression method [17,18].™@None of these 15 genes were found in the list of 21 genes that were differen-

tially expressed in the gastric fundus of wild type and *W/W<sup>V</sup>* mice which develop few IC-IM using a cDNA microarray. As we confirmed differential gene expression of *KIT* between the small intestines/gastric fundic tissues of wild type and those of *W/W<sup>V</sup>* mutant mice by semi-quantitative RT-PCR, our experimental system could detect genetic aberration in *W/W<sup>V</sup>* mice. Therefore our results might reflect the difference of the cellular entity of two types of ICCs, IC-MY and IC-IM, or the difference of the cellular composition between small intestine and fundus. To provide conclusive evidence, which support these speculations, expression profile using purified mRNA from isolated single interstitial cells might be very useful in the next study.

At the present time we do not know whether these genes are important to the function of the gastric pacemaker/neurotransmission apparatus or were down- or up-regulated as a result of the loss of ICC. These data, however, provide clear systemic genetic evidence that several important proteins that have roles in cell cycle, cytokinesis and formation of cytoskeleton, cellular metabolism, oxygen metabolism, cell adhesion, and development and differentiation of gut cells are significantly changed in the gastric fundus of *W/W<sup>V</sup>* mice. Generation of transgenic animals that show tissue-specific overexpression of the candidate genes, as well as the gene knockout animals might be helpful for elucidating the role of each gene in gastrointestinal motility.

The discovery of an entire human and mouse genes through the genome project is supposed to revolutionize biological medicine including molecular diagnosis of various diseases and development of novel treatment. The information combined with high throughput technology such as DNA microarray and SNP typing analysis will accelerate discovery of genes susceptible to or causing various diseases and contribute to screening of novel drugs that target these disease-gene products. In this sense, the effort of the molecular profiling project in which we attempt to discover genetic aberration in animal disease models such as *W/W<sup>V</sup>* mice will generate very variable resources for further elucidation of motility disorders. As reduced numbers of ICC have also been reported in several GI motility disorders, such as chronic intestinal pseudo-obstruction [5,6], slow-transit constipation and certain forms of gastroparesis [13,14], these gene information should aid the development of novel molecular-targeted therapies for these disorders, and may also identify diagnostic molecular markers for these disorders.

## Conclusion

We have identified twenty-one genes that encode functional proteins that are significantly up- or down-regulated in the *tunica muscularis* of the gastric fundus of *W/W<sup>V</sup>*

mice. Considering that none of these genes has been implicated in any aspect of GI motility, we suggest that many unknown genes could be involved in the cellular changes that lead to motility disorders associated with the loss of ICC. Gene microarray analysis is an effective method for screening the changes that occur in the expression patterns of genes in response to spontaneous or genetic mutations that lead to the loss of a specific cell type. Application of this technique may allow recognition of patterns of gene expression that are common to the several motility disorders in which ICC are lost, thus providing new insights into the molecular mechanisms responsible for the selective loss of ICC populations.

### List of abbreviations

BP1/6C3: glutamyl aminopeptidase

BST1/BP3: bone marrow stromal antigen 1(alias ADP-ribosylcyclase 2 precursor)

CPO: coproporphyrinogen oxidase

DMP: deep muscular plexus

ESTs: expressed sequence tags

FISH: fluorescence *in situ* hybridization

GI: gastrointestinal

ICC: interstitial cells of Cajal

IC-DMP: ICC at the level of the deep muscular plexus

IC-IM: intramuscular ICC

IC-MY: ICC at the level of the myenteric plexus

MCM7: minichromosome maintenance 7

MY: myenteric plexus

p160 ROCK2: p160 Rho-associated, coiled-coil forming protein kinase 2

RBP2: retinol binding protein 2, cellular

RHAMM: hyaluronan-mediated motility receptor

RT-PCR: reverse transcription-polymerase chain reaction

SNP: single nucleotide polymorphism

### Competing interests

None declared.

### Authors' contributions

YD and IT carried out the molecular studies and the design of study and coordination. BAJP and CC participated in the molecular studies. SW, KS and MF participated in the design of study and coordination. All authors read and approved the final manuscript.

### Acknowledgements

Supported by 08457165 (to MF) from the Japanese Ministry of Education, Science, Sports and Culture, JAPAN and DK 57236 (to SW) and PO1 DK41315 (to SW and KS) from the National Institutes of Health, USA.

### References

1. Ward SM, Burns AJ, Torihashi S and Sanders KM: **Mutation of the proto-oncogene c-kit blocks development of interstitial cells and electrical rhythmicity in murine intestine** *J Physiol (Lond)* 1994, **480**:91-97.
2. Burns AJ, Herbert TM, Ward SM and Sanders KM: **Interstitial cells of Cajal inhibit neurotransmission in the stomach** *Proc Natl Acad Sci USA* 1996, **93**:12008-12013.
3. Huizinga JD, Thunberg L, Kluppel M, Malysz J, Mikkelesen HB and Bernstein A: **W/kit gene required for interstitial cells of Cajal and for intestinal pacemaker activity** *Nature (Lond)* 1995, **373**:347-349.
4. Ward SM, Beckett EAH, Wang XY, Baker F, Khoyi M and Sanders KM: **Interstitial cells of Cajal mediate enteric excitatory neurotransmission in the murine fundus** *J Neurosci* 2000, **20**:1393-1403.
5. Takayama I, Kojima Y, Ohtsuka H, Sato T and Fujino MA: **Pathology of human idiopathic intestinal pseudo-obstruction and W/W<sup>v</sup> mice in gut motility: A gut pacemaker disease?** *Gut* 1995, **37(Suppl)**:A85.
6. Isozaki K, Hirota S, Miyagawa J, Taniguchi M, Shiomura Y and Matsuzawa Y: **Deficiency of c-kit+ cells in patients with a myopathic form of chronic idiopathic intestinal pseudo-obstruction** *Am J Gastroenterol* 1997, **92**:332-334.
7. Vanderwinden JM, Liu H, Menu R, Conreur JL, De Laet MH and Vanderhagen JJ: **The pathology of infantile hypertrophic pyloric stenosis after healing** *J Pediatr Surg* 1996, **31**:1530-1534.
8. Vanderwinden JM, Liu H, DeLaet MH and Vanderhagen JJ: **Study of the interstitial cells of Cajal in infantile hypertrophic pyloric stenosis** *Gastroenterol* 1996, **111**:279-288.
9. Yamataka A, Fujiwara T, Kato Y, Okazaki T, Sunagawa M and Miyano T: **Lack of intestinal pacemaker (C-KIT-positive) cells in infantile hypertrophic pyloric stenosis** *J Pediatr Surg* 1996, **31**:96-98.
10. Yamataka A, Kato Y and Tibboel D: **A lack of intestinal pacemaker (c-kit) in aganglionic bowel of patients with Hirschsprung's disease** *J Pediatr Surg* 1995, **30**:441-444.
11. Yamataka A, Ohshiro K, Kobayashi H, Fujiwara T, Sunagawa M and Miyano T: **Interstitial C-KIT+ cells and synapse in allied Hirschsprung's disorders** *J Pediatr Surg* 1997, **30**:1069-1074.
12. Vanderwinden JM, Liu H, DeLaet NH and Vanderhagen JJ: **Interstitial cells of Cajal in human colon and in Hirschsprung's disease** *Gastroenterol* 1996, **111**:901-910.
13. He CL, Burgart L, Wang L, Pemberton J, Young-Fadok L, Szurszewski J and Farrugia G: **Decreased interstitial cell of Cajal volume in patients with slow-transit constipation** *Gastroenterol* 2000, **118**:14-21.
14. Ordog T, Takayama I, Cheung WKT, Ward SM and Sanders KM: **Remodeling of networks of interstitial cells of Cajal in a murine model of diabetic gastroparesis** *Diabetes* 2001, **49**:1731-1739.
15. Takayama I, Daigo Y, Kojima Y and Fujino MA: **Gastrointestinal pacemaker system** *Nippon Shokakibyo Gakkai Zasshi* 2001, **98**:922-934.
16. Takayama I, Horiguchi K, Daigo Y, Mine T, Fujino MA and Ohno S: **The interstitial cells of Cajal and a gastrointestinal pacemaker system** *Arch Histol Cytol* 2002, **65**:1-26.
17. Takayama I, Daigo Y, Ward SM, Sanders KM, Yamanaka T and Fujino MA: **Differential gene expression in the small intestines of**

- wildtype and W/W<sup>v</sup> mice** *Neurogastroenterol Motil* 2001, **13**:163-168.
18. Takayama I, Daigo Y, Ward SM, Sanders KM, Walker RL, Horowitz B, Yamanaka T and Fujino MA: **Novel human and mouse genes encoding an acid phosphatase family member and its down regulation in W/W<sup>v</sup> mouse jejunum** *Gut* 2002, **50**:790-796.
  19. Liang P and Pardee AB: **Differential display of eukaryotic messenger RNA by means of the polymerase chain reaction** *Science* 1992, **257**:967-971.
  20. Ljubimova JY, Khazenzon NM, Chen Z, Neyman YI, Turner L, Riedinger MS and Black KL: **Gene expression abnormalities in human glial tumors identified by gene array** *Int J Oncol* 2001, **18**:287-295.
  21. Nakatsuru S, Sudo K and Nakamura Y: **Isolation and mapping of a human gene (MCM2) encoding a product homologous to yeast proteins involved in DNA replication** *Cell Genet* 1995, **68**:226-230.
  22. Labib K, Tercero JA and Diffley JFX: **DNA replication fork progression requires uninterrupted MCM2-7 function** *Science* 2000, **288**:1643-1647.
  23. Takahashi N, Tuiki H, Saya H and Kaibuchi K: **Localization of the gene coding for ROCK II/Rho kinase on human chromosome 2p24** *Genomics* 1999, **55**:235-237.
  24. Maekawa M, Ishizaki T, Boku S, Watanabe N, Fujita A, Iwamatsu A, Obinata T, Ohashi K, Mizuno K and Narumiya S: **Signaling from Rho to the actin cytoskeleton through protein kinases ROCK and LIM-kinase** *Science* 1999, **285**:895-898.
  25. Dong C, Wang J, Neame P and Cooper MD: **The murine BP-3 gene encodes a relative of the CD38/NAD glycohydrolase family** *Int Immunol* 1994, **6**:1353-1360.
  26. Itoh M, Ishihara K, Tomizawa H, Tanaka H, Kobune Y, Ishikawa J, Kai-sho T and Hirano T: **Molecular cloning of murine BST-1 having homology with CD38 and Aplysia ADP-ribosyl cyclase** *Biochem Biophys Res Commun* 1994, **203**:1309-1317.
  27. Demmer LA, Birkenmeier EH, Sweetser DA, Levin MS, Zollman S, Sparkes RS, Mohandas T, Lusic AJ and Gordon JL: **The cellular retinol binding protein II gene: sequence analysis of the rat gene, chromosomal localization in mice and humans, and documentation of its close linkage to the cellular retinol binding protein gene** *J Biol Chem* 1987, **262**:2458-2467.
  28. Wu Q, Li L, Cooper MD, Pierres M and Gorvel JP: **Aminopeptidase A activity of the murine B-lymphocyte differentiation antigen BP-1/6C3** *Proc Nat Acad Sci* 1991, **88**:676-680.
  29. Hardwick C, Hoare K, Owens R, Hohn HP, Moore D, Cripps V, Austen L, Nance DM and Turley EA: **Molecular cloning of a novel hyaluronan receptor that mediates tumor cell motility** *J Cell Biol* 1992, **117**:1343-1350.
  30. Hall CL, Wang C, Lange LA and Turley EA: **Hyaluronan and the hyaluronan receptor RHAMM promote focal adhesion turnover and transient tyrosine kinase activity** *J Cell Biol* 1994, **126**:575-588.
  31. Martasek P, Camadro JM, Delfau-Larue MH, Dumas JB, Montagne JJ, De Verneuil H, Labbe P and Grandchamp B: **Molecular cloning, sequencing, and functional expression of a cDNA encoding human coproporphyrinogen oxidase** *Proc Nat Acad Sci* 1994, **91**:3024-3028.
  32. Macy JA, Gilroy J and Perrin JC: **Hereditary coproporphria: a imitator of multiple sclerosis** *Arch Phys Med Rehabil* 1991, **72**:703-704.
  33. Barnes HD and Whittaker N: **Hereditary coproporphria with acute intermittent manifestations** *Brit Med J* 1965, **2**:1102-1104.

### Pre-publication history

The pre-publication history for this paper can be accessed here:

<http://www.biomedcentral.com/1471-230X/3/14/pre-pub>

Publish with **BioMed Central** and every scientist can read your work free of charge

"BioMed Central will be the most significant development for disseminating the results of biomedical research in our lifetime."

Sir Paul Nurse, Cancer Research UK

Your research papers will be:

- available free of charge to the entire biomedical community
- peer reviewed and published immediately upon acceptance
- cited in PubMed and archived on PubMed Central
- yours — you keep the copyright

Submit your manuscript here:  
[http://www.biomedcentral.com/info/publishing\\_adv.asp](http://www.biomedcentral.com/info/publishing_adv.asp)

